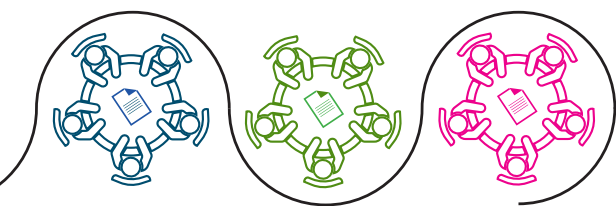




## STRUCTURE OF THE PARALLEL SESSION

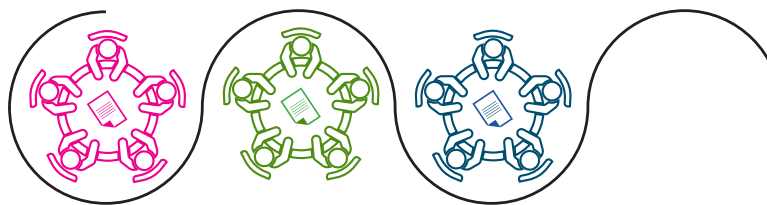
1

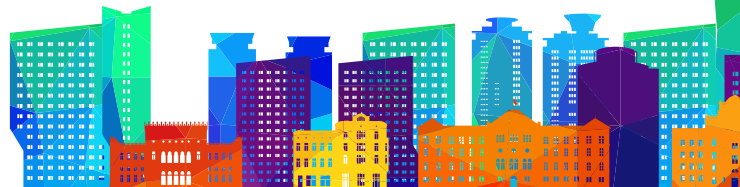
# Focused Exchanges: World Café Discussions & Meetings with European Partnerships' Representatives



## WORLD CAFÉ FORMAT

The World Café format is applied to foster a deeper understanding of specific challenges for each thematic area and encourages gathering diverse perspectives and creating collective wisdom. It is a collaborative and interactive method to host open dialogue and discussions and encourages collective learning. It involves creating an informal and cafe-like setting where participants gather around small tables to discuss a specific topic or question. During the parallel discussions, participants will be gathered in small groups around pre-defined challenges.





## WORLD CAFÉ FORMAT

1

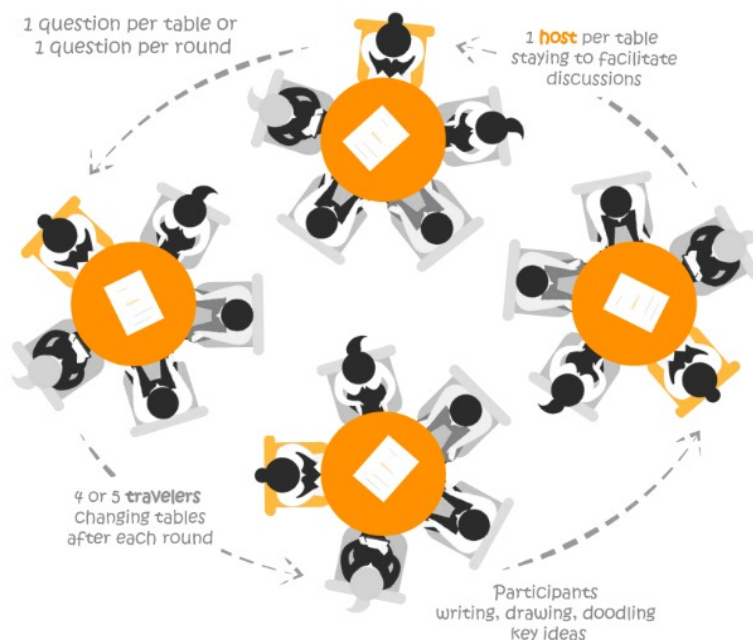
**Set-up:** Organizers will arrange four small tables with chairs for about 6-7 people in each parallel session room. Each table has a host, called “facilitator” who will remain on the table throughout the session.

2

**Introduction:** Each facilitator introduces the challenge for discussion and sets the context for the conversation in 2 minutes.

3

**Rounds of discussions:** Participants of the session engage in several rounds of discussions, usually lasting around 20 minutes. After each round, they rotate to different tables, except for the host, who stays to provide continuity and context.

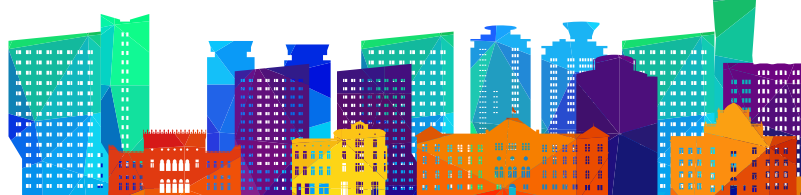


4

**Collecting ideas:** Throughout the rounds, participants share their thoughts, insights, and ideas on the given challenge. Ideas are captured and categorized on the flipchart by the facilitator, allowing everyone to see and build upon previous discussions.

5

**Sharing insights:** In the last 15 minutes of the session, participants of the parallel session gather together and each table's host presents the key insights and ideas that emerged from their table that is dedicated to a specific challenge.



## BILATERAL MEETINGS BETWEEN REPRESENTATIVES OF THE WB MINISTRIES AND EUROPEAN PARTNERSHIPS

Within the Parallel session 1, while participants of the parallel sessions rotate challenge tables in every 20 minutes, the representatives of the European partnerships meet the Ministry representatives of the WB economies in a separate setting, also in 20-minute slots. In these bilateral meetings, the European Partnerships briefly explain their objectives, strategic research and innovation agenda, as well as upcoming activities and establish first contacts with the relevant Ministry representatives from the WB economies to engage further discussions after the event. Innovation Fund representatives of the WB economies may also join in these bilateral meetings together with the Ministry representatives from their economies. Latest by a week before the event, conference participants of European partnerships, ministries and innovation funds from WBs will be assigned to bilateral meetings within the Parallel session 1, which will be indicated in the personalized Agenda on the Platform.

