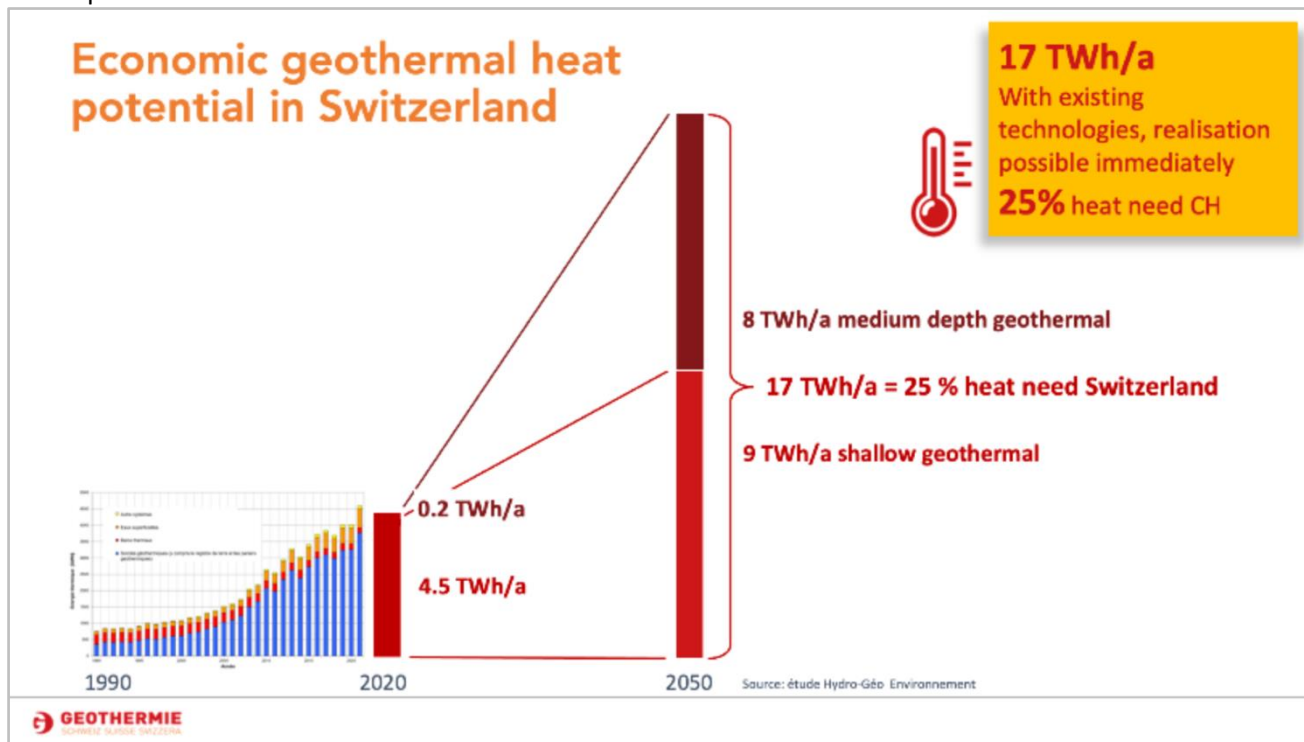


⇒ **Position your company in a growing market with great potential, become a Forum Partner!**

www.connect4geothermal.ch

4-5.10.2023, Basel

The forum is the occasion to accelerate the integration of geothermal energy, in the energy mix and to develop the value chain.



Geothermal energy for the heat and energy transition in cantons, municipalities and cities

On October 4 and 5, at the connect4geothermal forum in Basel, **proven solutions** for **decarbonization** and greater **energy independence** are explained with various geothermal applications.

Geothermal energy is a local, natural and renewable baseload energy, CO₂ neutral, available 365 days a year around the clock and in any weather. Today it is used below its potential. In Switzerland, more and more projects are entering the realization phase. A market with regional added value is emerging. The Forum is the platform to build bridges, between the different actors of the energy transition and geothermal energy.

The forum is aimed at **decision-makers** and **representatives of municipalities, cantons, municipal utilities** and **energy supply companies, companies involved in the planning and implementation of energy and geothermal solutions, large real estate owners and energy-intensive companies, investors and movers and shakers** of the energy transition. It is held in three languages with simultaneous translation in DE, FR and EN. The presentations and discussions are recorded and made available on the platform.

POSITION YOUR COMPANY IN A GROWING MARKET!

The geothermal energy market is booming with a strong dynamic. At the Forum, the players of the energy transition develop the Swiss market. The internet platform remains online after the forum and offers long-term targeted networking and visibility.



In the center of the Geothermal Forum is the foyer, with the booths and catering for all networking breaks (coffee, aperitif, food). Alongside is the area for the 1to1 meetings, as well as the rooms of the individual sessions with the presentations and panel discussions.

Reserve your place, for a booth in the foyer.

Exhibition-Partner Diamant, 10'000 CHF

- Booth 12 m², in the center of the foyer
- Included:
 - 6 entrances for Oct. 4 & 5 (for own use and/or for customers)
 - 2 tables (L 180 x B 75 x H 73 cm), 2 poster walls (H 186 x B 121 cm), 4 chairs, 2 round bar tables (Ø 80 cm, H 110 cm), 2 bar stools, power connection type 13 (230V, 10A), and/or own stand material
 - Short presentation of the company in a plenary session (short pitch, short clip)
 - One document that is distributed to all participants
 - Special requests on demand
 - Logo: on poster board / own stand material (organized by exhibitor), on internet platform and documents of the forum, on 1st partner level (implemented by organizers)

Exhibition-Partner Gold, 5'000 CHF

- Booth 6 m²
- Included:
 - 3 entrances for Oct. 4 & 5 (for own use and/or for customers)
 - 1 table (L 180 x B 75 x H 73 cm), 1 poster wall (H 186 x B 121 cm) and 2 chairs, 1 round bar table (Ø 80 cm, H 110 cm), 1 bar stool, power connection type 13 (230V, 10A), and/or own stand material
 - Logo: on poster board / own stand material (organized by the exhibitor), on the internet platform and documents of the forum on 2nd partner level (implemented by organizers)

Exhibition-Partner Silver, 3'000 CHF

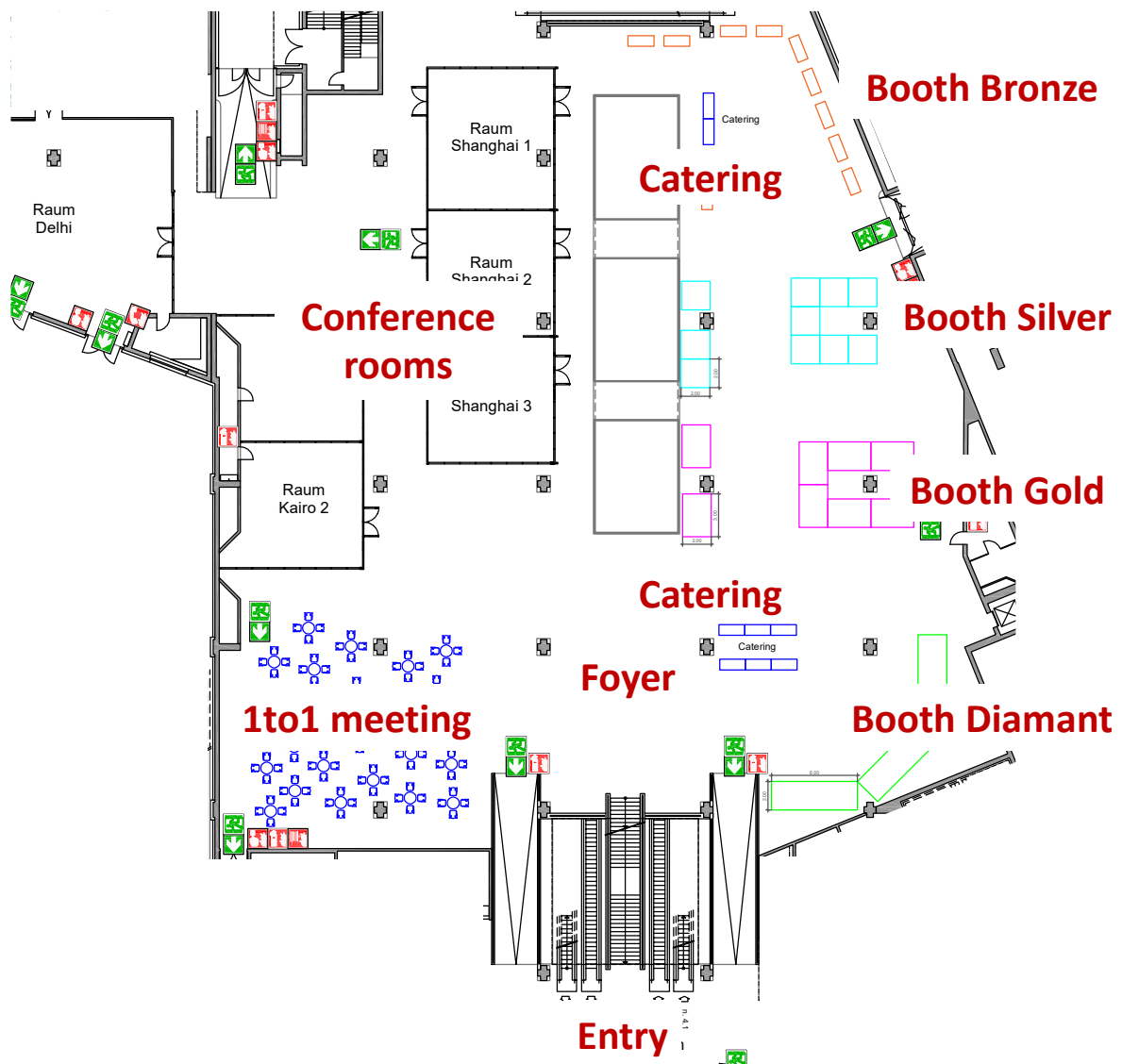
- Booth 4 m²
- Included:
 - 1 poster wall (H 186 x B 121 cm), 1 round bar table (Ø 80 cm, H 120 cm), 1 bar stool, power connection type 13 (230V, 10A), und/or own rollup / banner
 - 2 entrances for Oct. 4 & 5 (for personal use and/or for clients)
 - Logo: on poster board / own rollup / banner (organized by exhibitor), on the internet platform and documents of the forum on 3rd partner level (implemented by organizers)

Exhibition-Partner Bronze, 1'500 CHF

- Company documentation on the row of tables
- Included:
 - Half of a table (L 180 x B 75 x H 73 cm) on the row of tables, for company documentation
 - 1 entrance for Oct. 4 & 5 (for own use and/or for clients).
 - Logo: on the internet platform and documents of the Forum at 4th partner level (implemented by organizers).

Position your company as a network enabler

- **Partner Networking Dinner (Evening) or Lunch (Midday), 10'000 CHF (Exclusive/Exklusiv Partner)**
 - 6 entrances for Oct. 4 & 5 (for personal use and/or for clients).
 - Logo on website and documentation of the forum, on 1st level.
- **Partner Networking Dinner (Evening) or Lunch (Midday), 5'000 CHF (non-exclusive)**
 - 3 entrances for Oct. 4 & 5 (for personal use and/or for clients).
 - Logo on website and documentation of the forum on 2nd level.
- **Partner Networking Pause (Vormittag oder Nachmittag), 3'000 CHF**
 - 2 entrances for Oct. 4 & 5 (for personal use and/or for clients).
 - Logo on internet site and documentation of the forum on 3rd level.
- **Partner Communication and Networking (discount on admissions of your members)**
 - **Discount on all admissions of your members** (same price as for members Geothermie-Suisse) if you become a communication partner and promote the forum to your members and through your channels



[Congress Center Basel, Hall 4, virtual Roomtour](#)



Practical information

Construction and dismantling

Booths can be set up on October 4th, 2023, from 08:00 to 17:00 and taken down on October 5th from 17:00 to 22:00.

Material shipments

Material will be accepted by the Congress Center, at the earliest, one week before the event.

Delivery address:

Congress Center Basel
MCH Messe Schweiz (Basel) AG
c/o connect4geothermal / Hall 4.0 / Name Company / Stand number
Messeplatz 21
CH-4058 Basel

Please note:

If the information is incomplete, the shipment may be delivered late or refused and returned. In addition, Swiss customs requires certain documents for international shipments. Please contact your transport service in good time. Deliveries against cash payment will be refused. Congress Center Basel assumes no responsibility or liability for loss, damage or delay...

Directions / Deliveries

Address: Congress Center, Hall 4.0, Messeplatz 21, 4058 Basel, Switzerland.

Situation plan: [googlemaps](#)

Arrival and parking: <https://www.messe-basel.com/ueber-uns/anreise/>

Program Forum and further information

www.connect4geothermal.ch

Contact

connect@geothermie-schweiz.ch

Order

Please complete and send to: connect@geothermie-schweiz.ch

Company

First name and surname

E-Mail

Tel fix

Tel. mobile

We become Exhibition-Partner Diamant, 10'000 CHF

- Booth 12 m², in the center of the foyer

We need:

Table (L 180 x B 75 x H 73cm), max. 2:	<input type="checkbox"/> 0	<input type="checkbox"/> 1	<input type="checkbox"/> 2
Poster walls (H 186 x B 121cm), max. 2:	<input type="checkbox"/> 0	<input type="checkbox"/> 1	<input type="checkbox"/> 2
Chairs, max. 4:	<input type="checkbox"/> 0	<input type="checkbox"/> 1	<input type="checkbox"/> 2
Round bar table (Ø 80 cm, H 110 cm), max 2.:	<input type="checkbox"/> 0	<input type="checkbox"/> 1	<input type="checkbox"/> 2
Bar stool, max 2:	<input type="checkbox"/> 0	<input type="checkbox"/> 1	<input type="checkbox"/> 2
Power connection type 13 (230V, 10A):	<input type="checkbox"/> yes	<input type="checkbox"/> no	
We take our own stand material	<input type="checkbox"/>		

We become Exhibition-Partner Gold, 5'000 CHF

- Booth 6 m²

- We need:

Table (L 180 x B 75 x H 73cm), max. 1:	<input type="checkbox"/> 0	<input type="checkbox"/> 1	
Poster wall (H 186 x B 121cm), max. 1:	<input type="checkbox"/> 0	<input type="checkbox"/> 1	
Chairs, max. 2:	<input type="checkbox"/> 0	<input type="checkbox"/> 1	<input type="checkbox"/> 2
Round bar table (Ø 80 cm, H 110 cm), max. 1.:	<input type="checkbox"/> 0	<input type="checkbox"/> 1	
Bar stool, max. 1:	<input type="checkbox"/> 0	<input type="checkbox"/> 1	
Power connection type 13 (230V, 10A):	<input type="checkbox"/> yes	<input type="checkbox"/> no	
We take our own stand material	<input type="checkbox"/>		

We become Exhibition-Partner Silver, 3'000 CHF

- Booth 4 m²

- We need:

Round bar table (Ø 80 cm, H 110 cm), max. 1.:	<input type="checkbox"/> 0	<input type="checkbox"/> 1
Bar stool, max. 1:	<input type="checkbox"/> 0	<input type="checkbox"/> 1
Power connection type 13 (230V, 10A):	<input type="checkbox"/> yes	<input type="checkbox"/> no
We take our own rollup / banner with us	<input type="checkbox"/>	

We become Exhibition-Partner Bronze, 1'500 CHF

- Company documentation on the row of tables

- We need:

Half from table (L 180 x B 75 x H 73cm), max. 1:	<input type="checkbox"/> 0	<input type="checkbox"/> 1
--	----------------------------	----------------------------

☐ We become exclusive partner networking dinner (Evening) or lunch (Midday), 10'000 CHF

☐ We become non-exclusive partner networking dinner (Evening) or lunch (Midday), 5'000 CHF

☐ We become partner networking break (morning or afternoon), 3'000

☐ We become partner Communication and Networking (discount on admissions of your members)