

KET*

Focus on (*) Key Enabling Technologies - nanotechnologies, advanced materials, advanced manufacturing and processing



INNOVATE TOGETHER

27th June 2019 - Strasbourg - FRANCE

Project idea/ Field of expertise:

BIOPLASTICS
NANOSAFETY

Organisation Name:

ITENE: Packaging, Transport & Logistics

Adressed challenge(s)/ PPP(s):

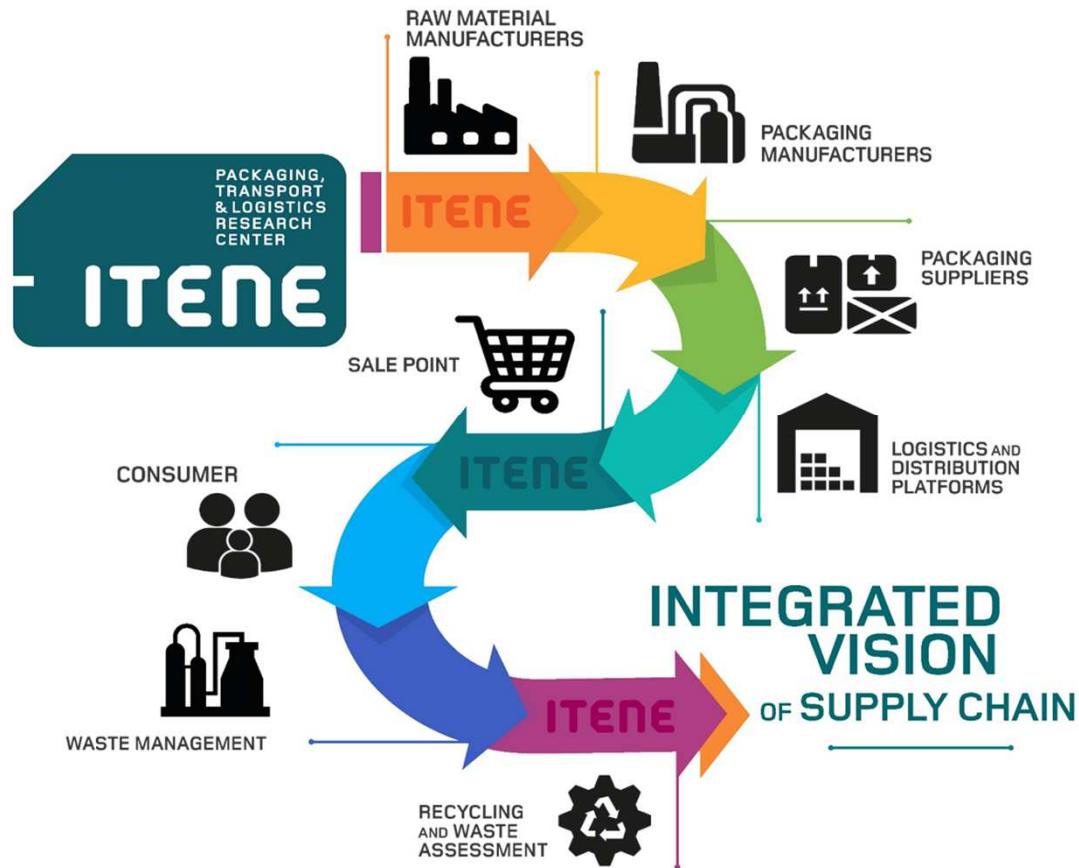
NMBP Regulations/safety --- BIOTECH

Adressed topic(s) in Work Programme:

CE-BIOTEC-09-2020: Upcycling Bio Plastics of food and drinks packing

NMBP-16-2020: Safe by design, from science to regulation: multi-component nanomaterials

ITENE: PACKAGING, TRANSPORT & LOGISTICS



- 39 FP7/FP6 projects (8 projects as coordinator/technical manager)
- 21 H2020 Projects (4 as coordinators, 1 as technical manager).

European Strategy for Plastics, bio plastics, food packaging, upcycling



Sustainability:

- Collection, logistics, sorting (Bio-based additives and traceable markers for plastics formulations)
- Delamination, decontamination processes.
- Characterization and Valorization of recuperated plastic fraction.
- Mechanical/chemical/enzymatic recycling.
- Hydrolysis processes to produce high added value bioproducts
- Biodegradability in environments as soil, freshwater and marine, organic recycling as end-of-life.
- LCA, eco-design, Co-creation/awareness.

Advanced materials:

- Bio-based material development that can be degraded in aquatic environments and recyclable to close the loop.
- PHA, PLAS formulations and compounding, Material characterization, Food safety / regulations.

Sealive



Safety and regulations leadership and Safe-by-Design (SbD)



- ITENE can bring expertise on Safe-by-Design (SbD) approaches and tools in the development of functional and engineered nanomaterials (ENMs) and nano-enabled products (NEPs) on different sectors such as packaging, nanomaterials, pharma, cosmetics, food, among others.
- We are interested to act as WP leader. We can bring industrial partners and academia/research partners from third countries.
- Previous projects where ITENE is in charge of regulation, safety, health, risk monitoring and mitigation, control of exposure, etc
 - ✓ **H2020 - NMBP**: LEE-BED, Repair3D NANORIGO, BIORIMA.
 - ✓ **FP7**: NANOMICEX, GUIDEnano, NANOREG, NANOBARRIER, NANOSAFEPACK.
 - ✓ **LIFE**: NanoExplorer , LIFE-COMBASE, NANOMONITOR, NanoRISK, REACHnano, ECOTEXNANO.
 - ✓ **INTERREG SUDOE**: NANODESK.

Contact details

Contact person

Organisation:	ITENE: packaging, Transport & Logistics
---------------	---

Adress	Albert Einstein. Paterna. 46980. SPAIN
--------	--

Phone	+34 661 696 226
-------	-----------------

E-mail	Oscar.ruiz@itene.com
--------	--
