

session

- Customized Cartilage and Bone Implant Development from Adipose Tissue Derived Mesenchymal Stem Cells on 3D Printed Scaffolds
 - Aristeidis Kritis
 - Aristotle University of Thessaloniki

- **Aristotle University of Thessaloniki**
- **Greece**
- Department of Physics with expertise in Molecular dynamics-Monte Carlo-Interatomic potentials and Finite Elements Analysis
- Department of Physiology School of Medicine with expertise in regenerative medicine focused on personalized cartilage and bone implant development
- Past experience with EU-funded projects include the implementation of the project “**Cross Border Stem Cell Regenerative Medicine Center**” with the acronym “**REMEDIC**” www.remedicproject.eu under The «Greece – the former Yugoslav Republic of Macedonia IPA Cross-Border Programme 2007-2013»

H2020 topic: Custom-made biological scaffolds for specific tissue regeneration and repair

- Combination of conventional "off-the-shelf" technologies in material processing and scaffold manufacturing with novel data processing techniques, in order to ensure conformity with the medically required precision while maintaining an overall low cost.
- This allows for Structural analysis of scaffolds and Scaffold design optimization on a case to case basis
- Optimized protocols for cartilage and bone development on 3D printed scaffolds of biocompatible materials
- Advance Therapeutic Medicinal Product (ATMP) development for tissue regeneration

HORIZON 2020

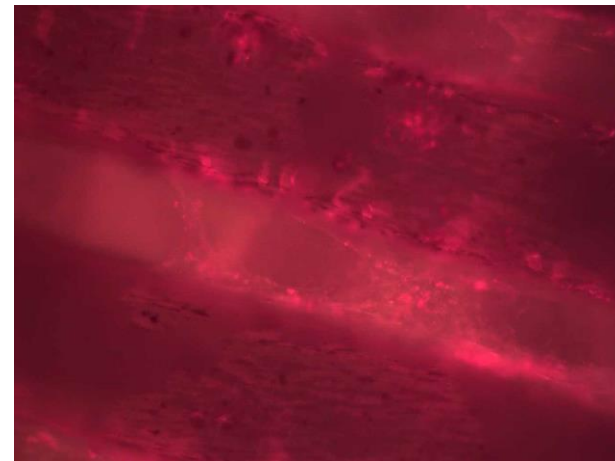
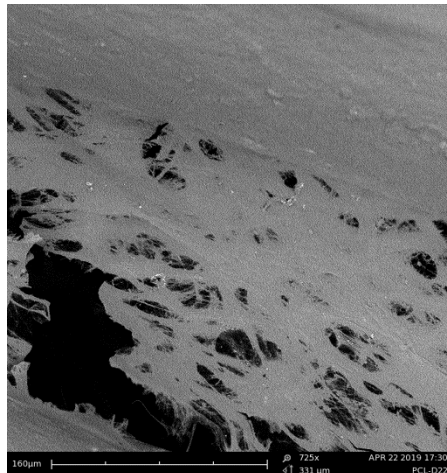
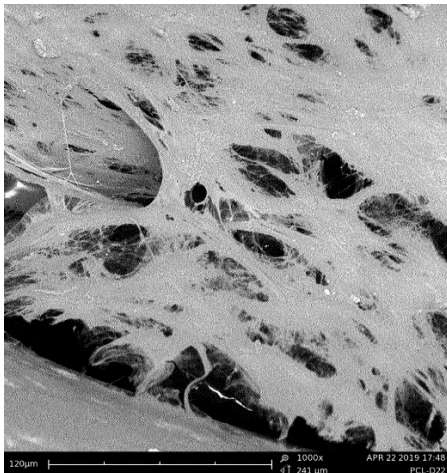
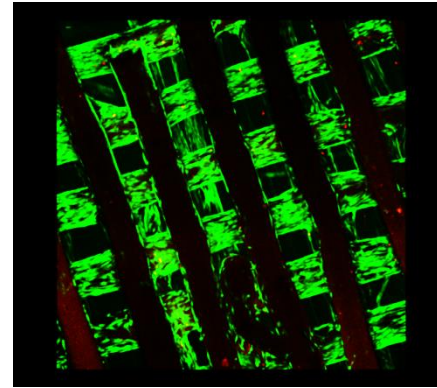
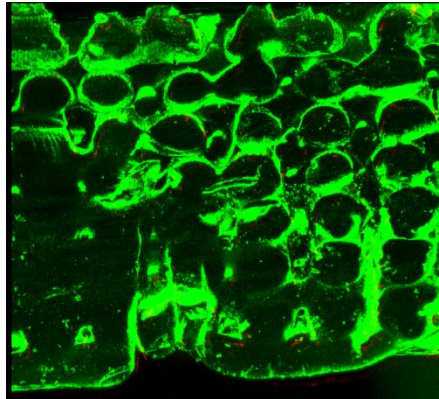
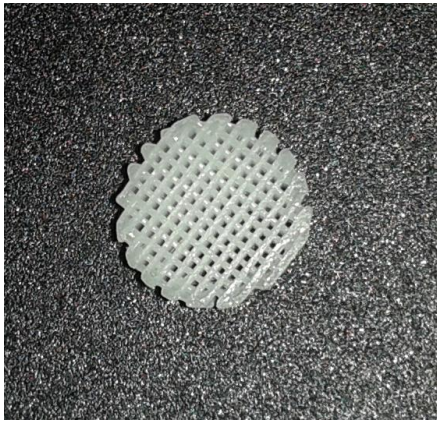


HEALTH,
DEMOGRAPHIC CHANGE
AND WELLBEING

4 July 2019, Brussels

HEALTH PARTNERING DAY 2019

#H2020PartnerHealth



Contact details



#H2020PartnerHealth

- **Aristeidis Kritis**
- Lab of Physiology, Medical School, Aristotle University of Thessaloniki
- Aristotle University of Thessaloniki, 54124, Thessaloniki, Greece
- +306944261779, +302310999007
- Kritis@auth.gr