

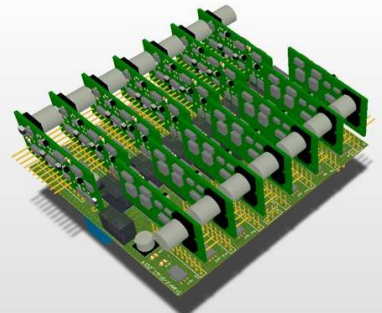


mci management center innsbruck
the entrepreneurial school®

Michael Sieb

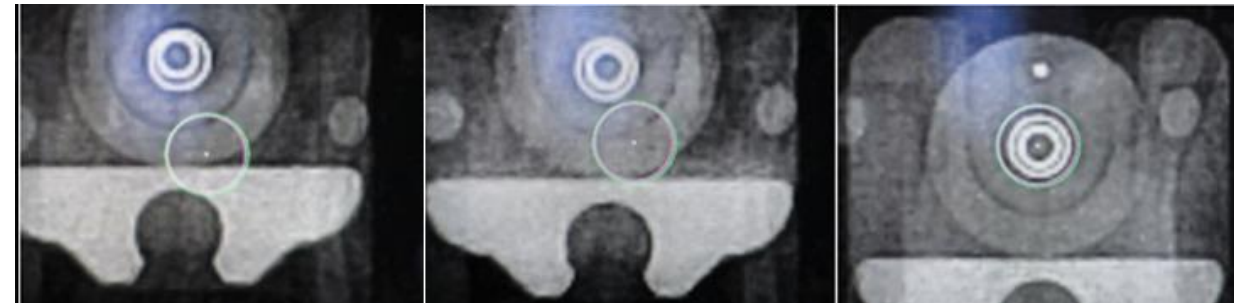
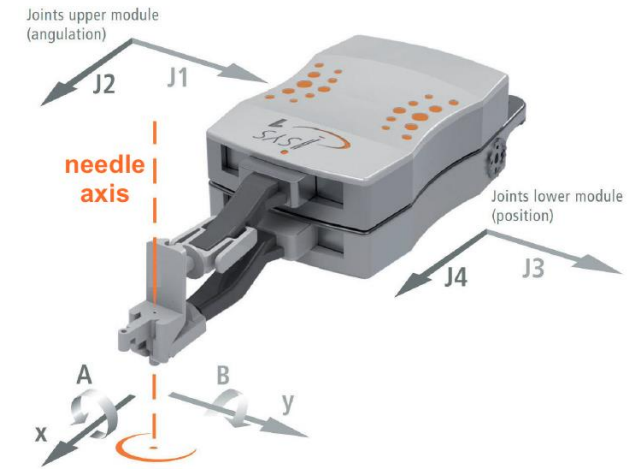
Industrial Project

- Medical Rehabilitation & Training
- Development, Design, Prototyping
- Industrial Project

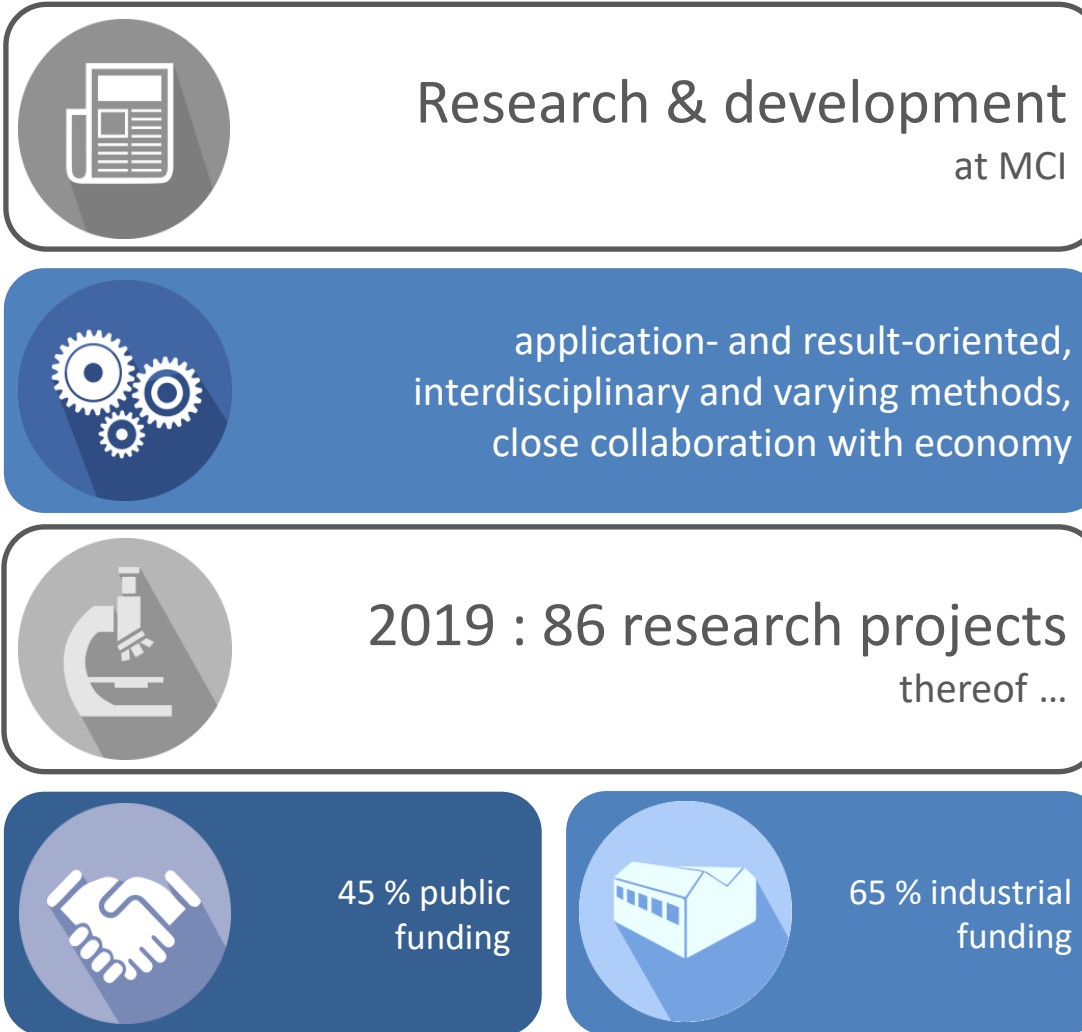


Master Thesis

- Medical Robotic
 - Control Engineering
 - Industrial Project
 - Medical University
- 3 times faster
 - 10 times higher precision
 - 75% less radiation



Mission, facts & figures



Infrastructure



~ 3.000m² Laboratory Area

- 4 x wet chemistry lab
- 4 x energy lab
- 3 x mechanical engineering lab
- 5 x electrical engineering lab
- 4 x process engineering lab
- 4 x analytic lab
- 1 x medical engineering lab

How to cooperate



Internship

- Short-term Internship
- Summer Jobs
- Integrated Internship



Internship^{plus}

- Internship
- Part-time Job + Studies
- Master/Bachelor Thesis within the company



Bachelor & Master Thesis

- Within the company



Research Projects

- Funded Projects (e.g. FFG, Land Tirol)
- Industrial Projects



Research Cooperation

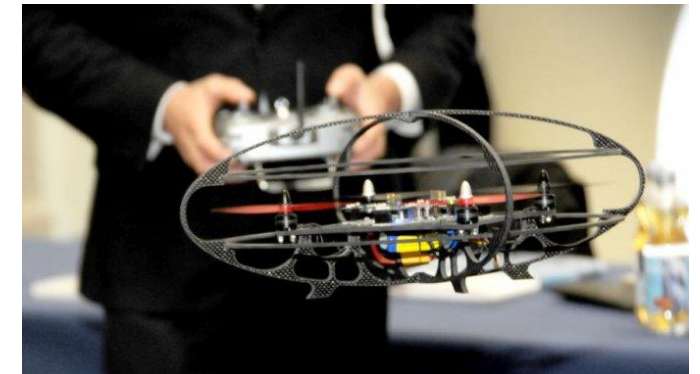
- Development of a sustainable cooperation in form of an application oriented competence center

Research & Development – Big Projects

- **Digital Twin**
- Implementation of a virtual machine
- Incorporation of dynamic and nonlinear effects
- Improvement of existing products
- Predictive maintenance



- **EAL – Emerging Application Lab**
- Industrial Funding
- Development of novel components for semi-conductor industry



Thank you for your attention!



More Information:

Michael Sieb

Senior Lecturer

Medical Engineering

Maximilianstrasse 2, 6020 Innsbruck, Austria

Phone: +43 512 2070 - 3937

<mailto:michael.sieb@mci.edu>

mentoring the motivated.