



AI-BASED COMPUTER VISION SOLUTIONS

José Antonio Sánchez (Head of Computer Vision)

ROVIMATICA

SME

SPAIN

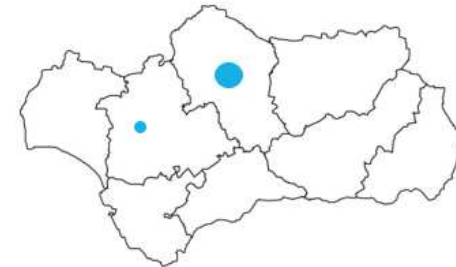
jose.sanchez@rovimatica.com

General overview



Technological SME. Capabilities:

- Robotics (standard, collaborative, sensitive).
- Process/Machinery automation. Mechatronic.
- Computer vision.
- Control.
- R&D&I projects.



H2020 calls

Earth observation

- DT-SPACE-01-EO-2018-2020: Copernicus market uptake
- LC-SPACE-04-EO-2019-2020: Copernicus evolution – Research activities in support of cross-cutting applications between Copernicus service
- LC-SPACE-24-EO-2020: Copernicus evolution - Mission exploitation concepts

Artificial Intelligence and Space

- DT-SPACE-25-EO-2020: Big data technologies and Artificial Intelligence for Copernicus
- SPACE-27-TEC-2020: SRC - Space robotics technologies

Space business, entrepreneurship, outreach and education

- DT-SPACE-26-BIZ-2020: Space hubs (support to start-ups)

Other actions

- Space surveillance and tracking (SST)



Has a large experience (18 years) implementing his know-how to develop new solutions in computer vision systems including AI- BASED image processing (3 year experience)

AI-BASED COMPUTER VISION:

Vehicles:

Face tracking and landmark detection.
Driver drowsiness detection using AI (Tensorflow, Caffe, Keras)

UAVs and SPACE:

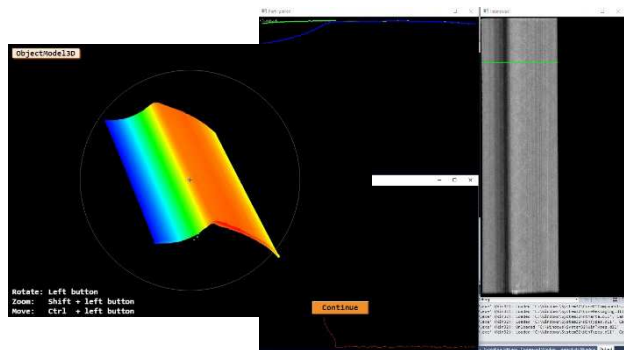
Multispectral , 3D and thermal image processing,
Object detection and tracking using AI.

Industrial:

Quality control systems,
Matching 3D, Bin Picking
Robots guide, defect detection, classification

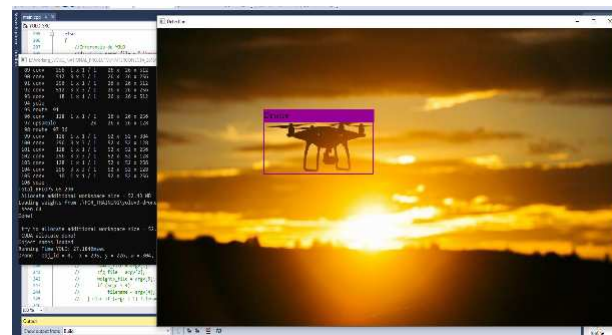


Railway infrastructure detection

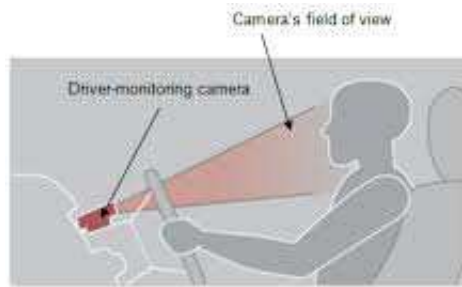


AI Based computer vision Projects

Safety at critical infraestructure



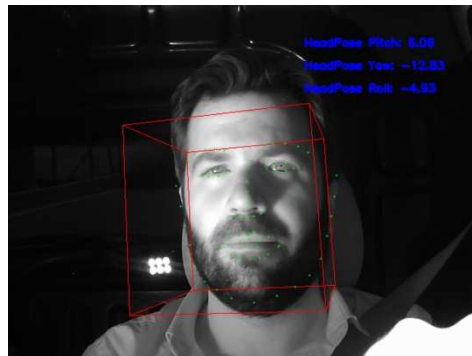
UAVs detection



FACE AND LANDMARKS
DETECTION



Driver Monitoring System



AI Based computer vision Projects

UAVs multispectral and thermal image processing (precision farming).

