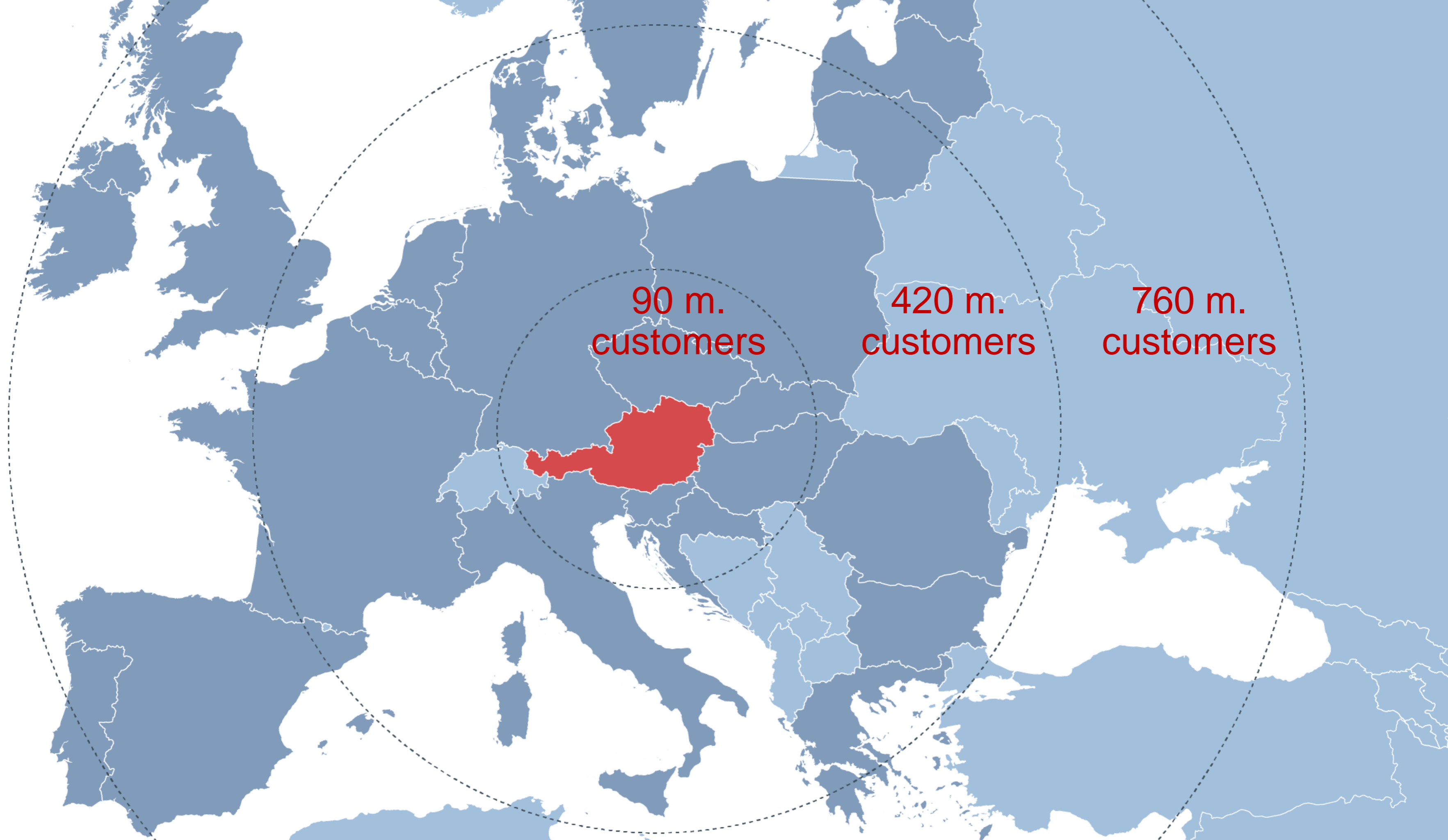
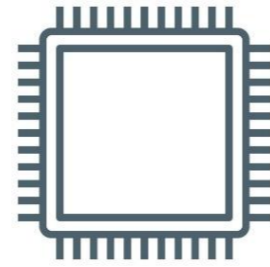




#Business Location  
Austria



# ICT in Austria



**8.6 %**  
Contribution to GDP



**36.6 billion €**

Revenue



**290,000**  
Employees

2020



**15-20 %**  
R&D quota



**20,000 €**

R&D expenditures  
per employee



**80 %**  
export ratio

# Examples of sub-sectors of particular importance

- Artificial intelligence & machine learning based technologies
- Drone development
- Cybersecurity
- Software for autonomous driving
- SaaS providers
- Development and provision of FinTech payment solutions

# Top R&D institutions

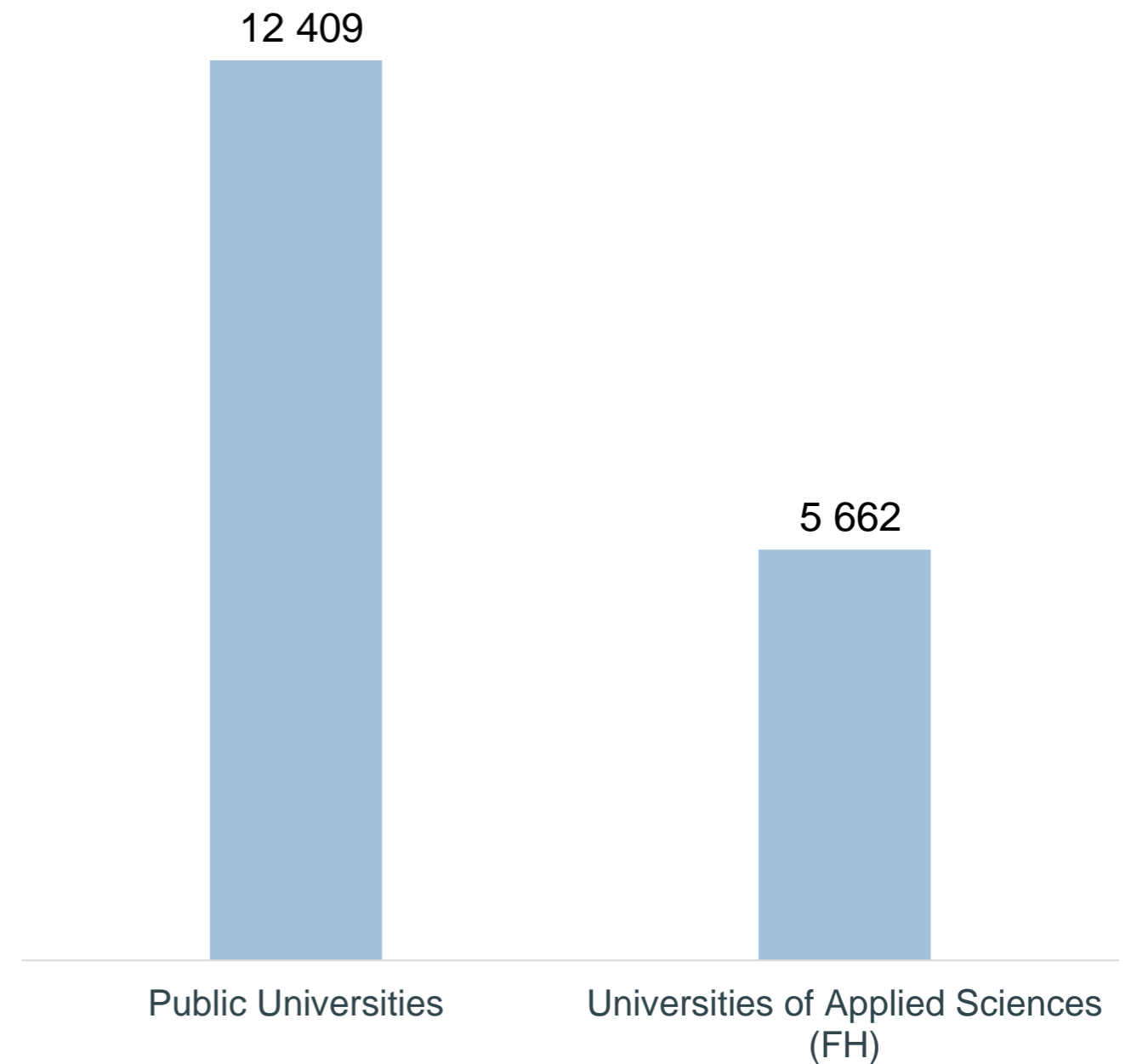
## Examples



# Large talent pool

- Austria has a highly ranked education system – which is largely **oriented towards the needs of business**.
- With more than 190,000 students and 46,000 researchers, Vienna is the **largest university city in Central Europe and in the German-speaking world**.
- Austria's technical universities graduate over 18,000 STEM students each year
- The Universities of Applied Sciences (FH) and the Higher Technical Education Institutes (HTL) offer **applied technical training**.

STEM graduates in Austria 2018/19



Source: Statistik Austria

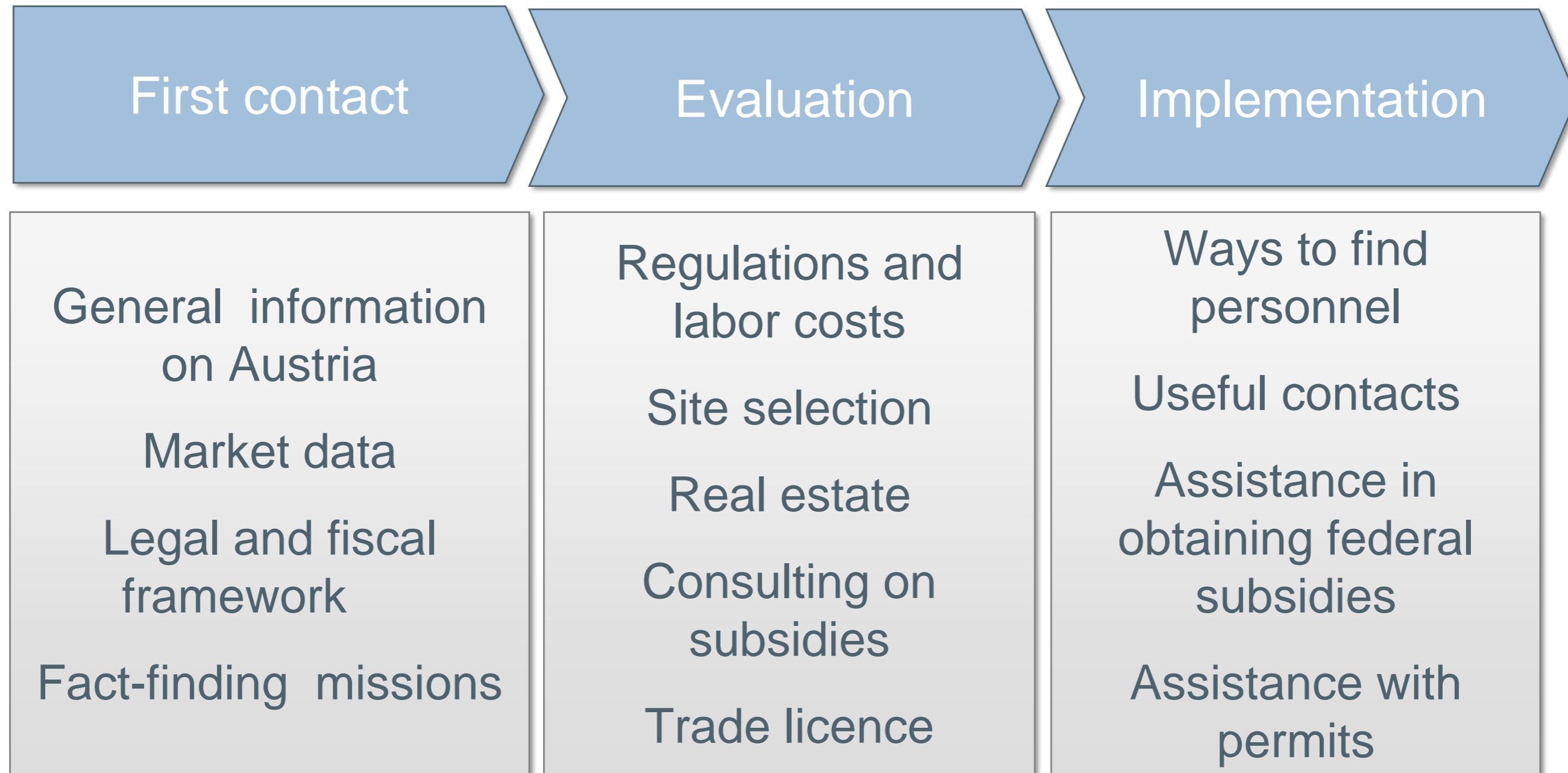


# ABA OPEN DAY 2021

## House Rules

- Please turn off your microphone
- Please do ask questions through the chat window
- Don't hesitate to get in contact with us at any other time after the event. We are looking forward to hearing from you!

# ABA offers fast, non-bureaucratic consulting and services – free of charge

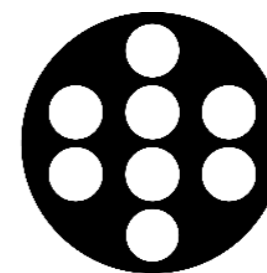


...for all sectors and types of business from commercial to R&D!

# ABA - Your personal guide to the Business & Research Location Austria

Michaela Laussegger  
Director The Americas  
[m.laussegger@aba.gv.at](mailto:m.laussegger@aba.gv.at)  
[www.investinaustria.at](http://www.investinaustria.at)





**VEXCEL**  
IMAGING

---

# Company Information

---

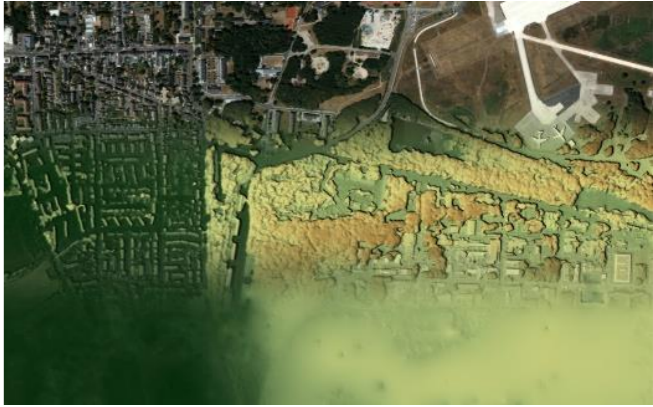
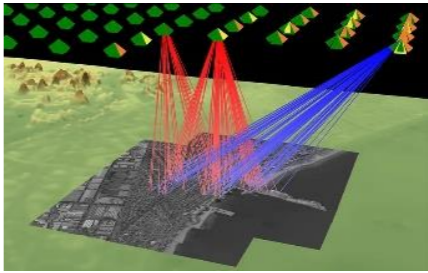
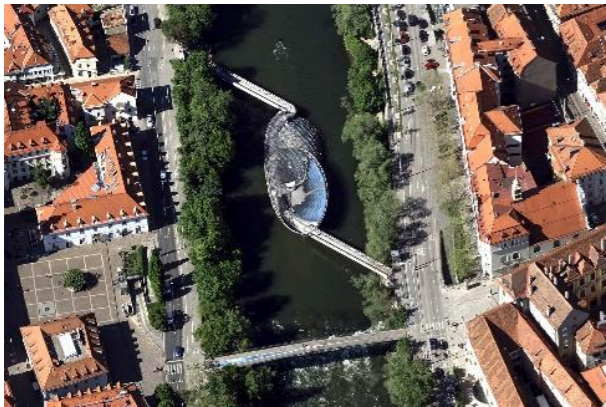
# Product Portfolio

## Aerial Cameras



Vexcel Data Program

UltraMap Software



# Where we come from



Vexcel Imaging acquires image resources from Verisk

Grew from 120 to >450 employees, sites in Austria, Spain and across USA

Biggest survey plane fleet world-wide, >100 planes

Launch of Vexcel Data Program

US-nation wide disaster mapping

Management-Buyout: Vexcel Imaging GmbH becomes a privately owned company

Approx. 60 employees, focus on camera technology

Vexcel Imaging acquired by Microsoft Corp., Redmond/USA

1<sup>st</sup> Digital Photogrammetric Camera: UCD  
Vexcel Imaging GmbH, Graz/Austria founded

Development of new photogrammetric  
scanner UltraScan 5000

# UltraCam - Aerial Sensors

- Photogrammetric Oblique

- Wide-Area Mapping

- Photogrammetric Nadir

**ULTRACAM**  
EAGLE

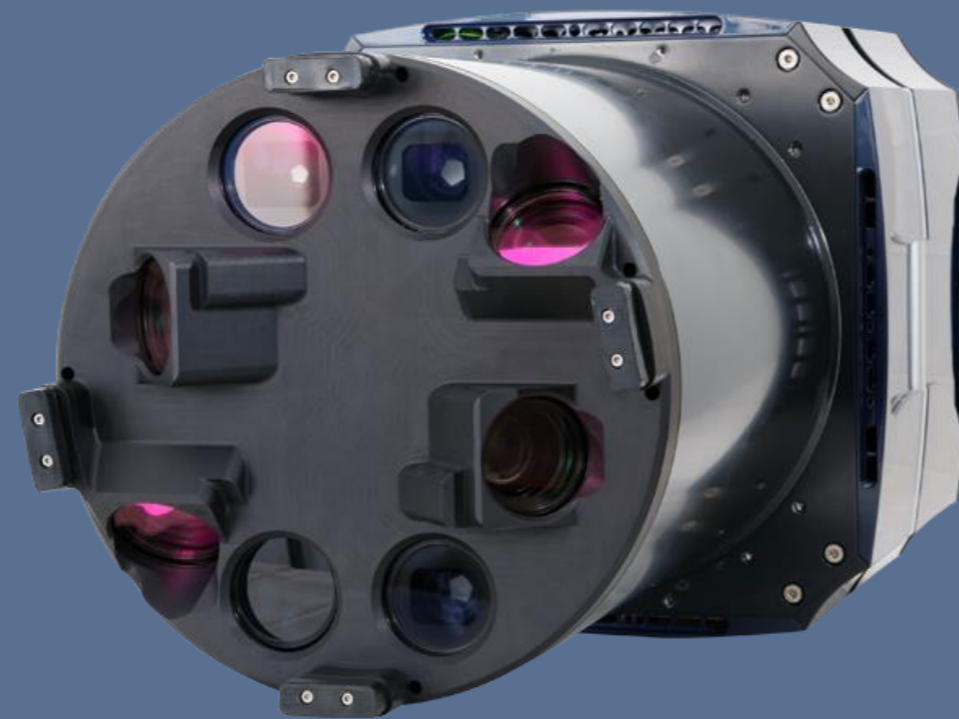


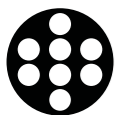
**ULTRACAM**  
CONDOR



**ULTRACAM**  
OSPREY



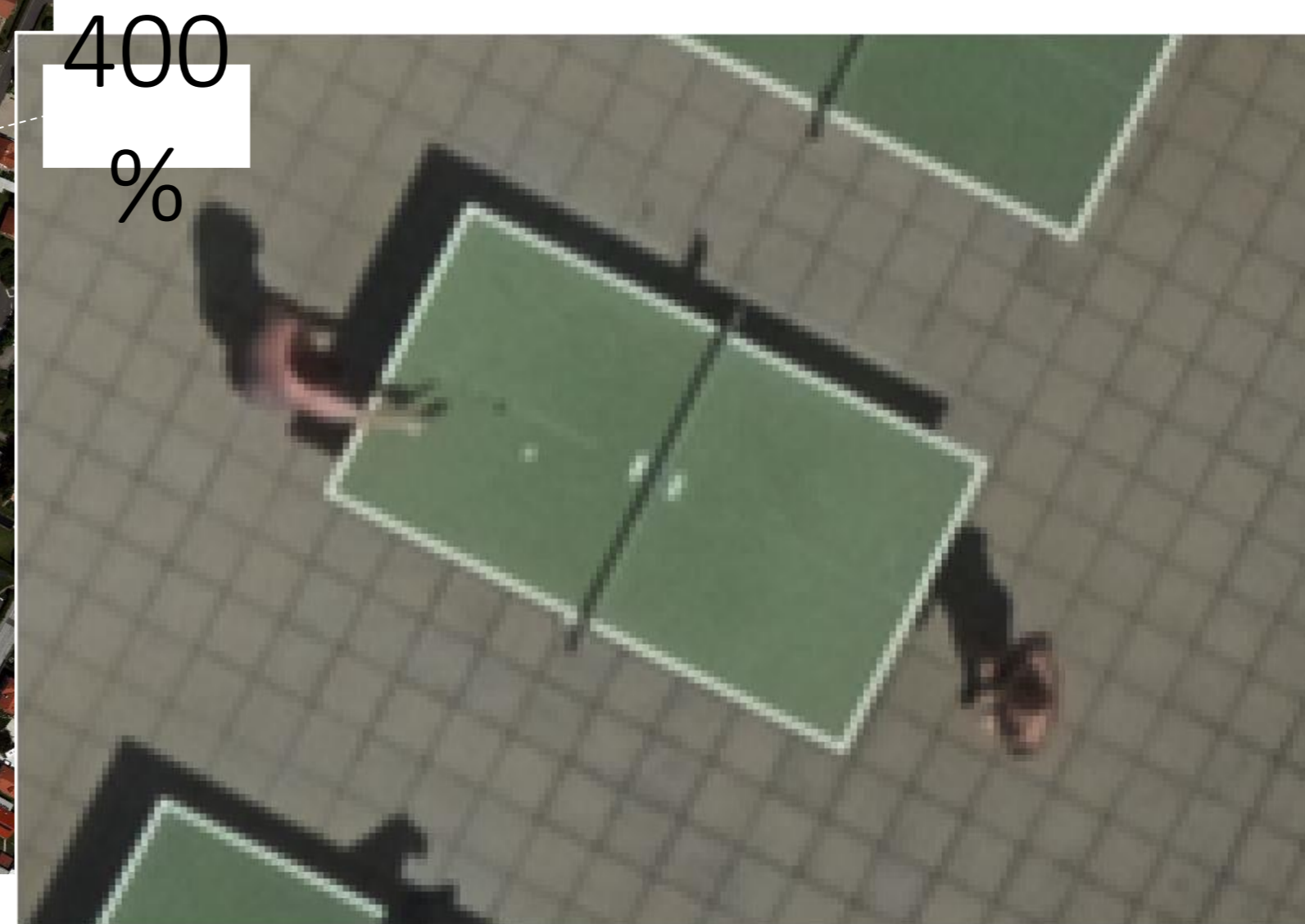




# Capture the smallest details with an ultra-large footprint

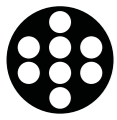


A ping pong balls has a diameter of 40 mm.



Gleisdorf, Austria 2015 • UltraCam Eagle • GSD 3 cm • RGB • 1200 m AGL





## Streamlined efficiency.

The end-to-end UltraMap workflow provides UltraCam data processing from ingest of raw data to delivery of point clouds, DSMs, ortho imagery and 3D textured TINs.



# Technical support – wherever you are



**North America**

Denver, USA



**Europe**

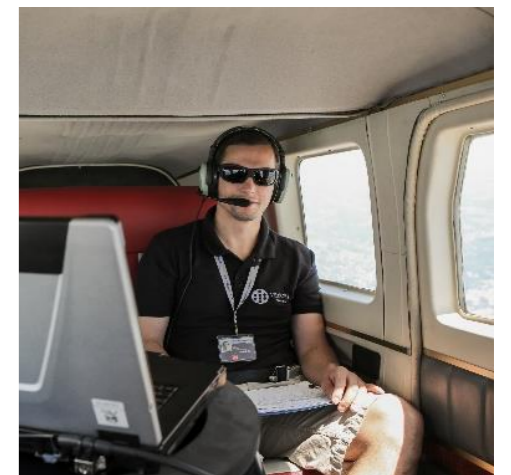
Graz, Austria



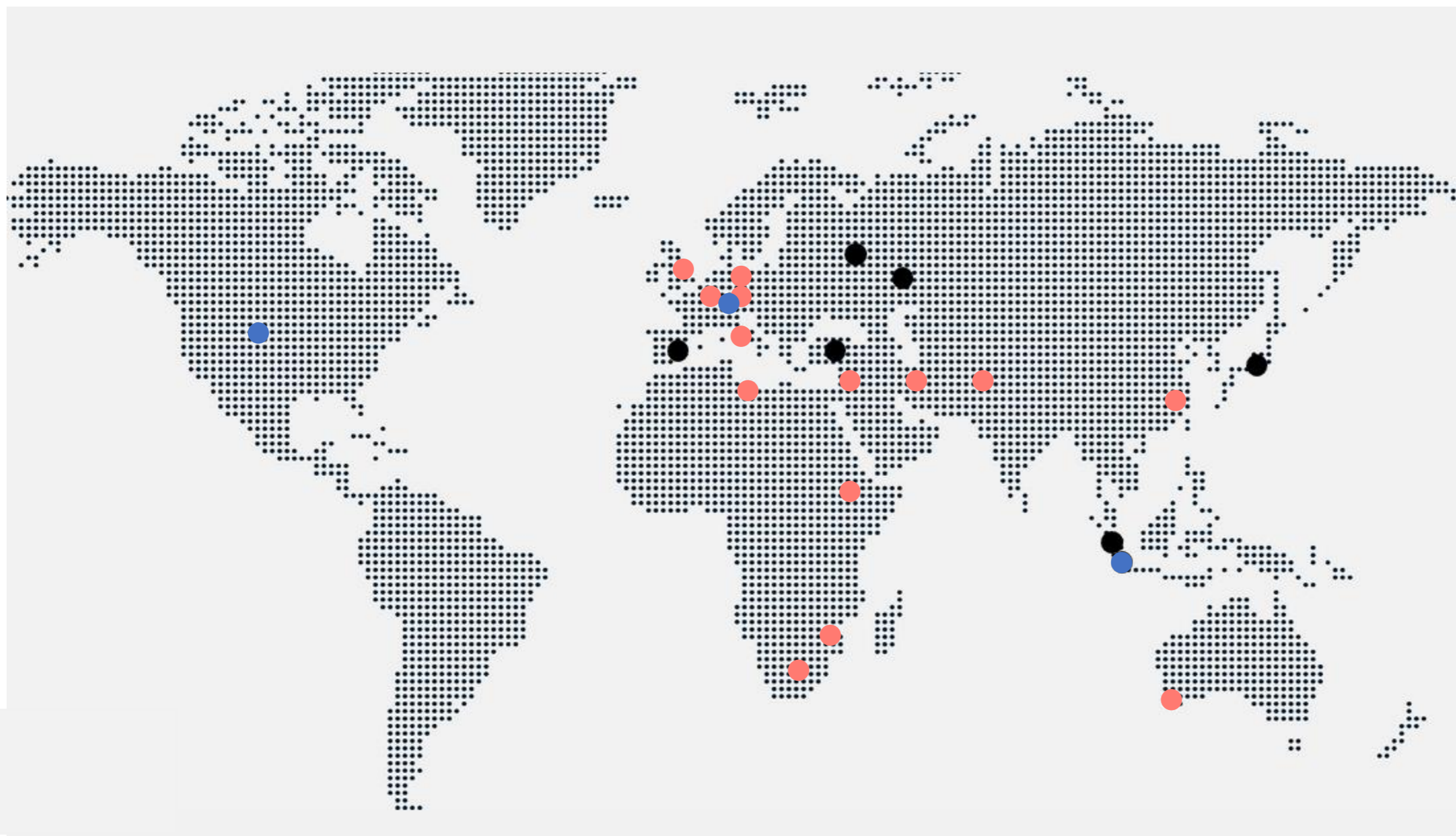
**Asia**

Singapore

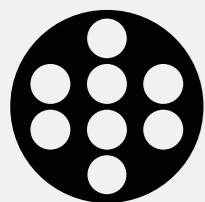
Our global Support team is set up in 3 different locations to guarantee a 24/7 support.



# Benefit from our worldwide network



- Sales Partners
- Sales & Support Partners
- Calibration Labs



# Vexcel Data Program

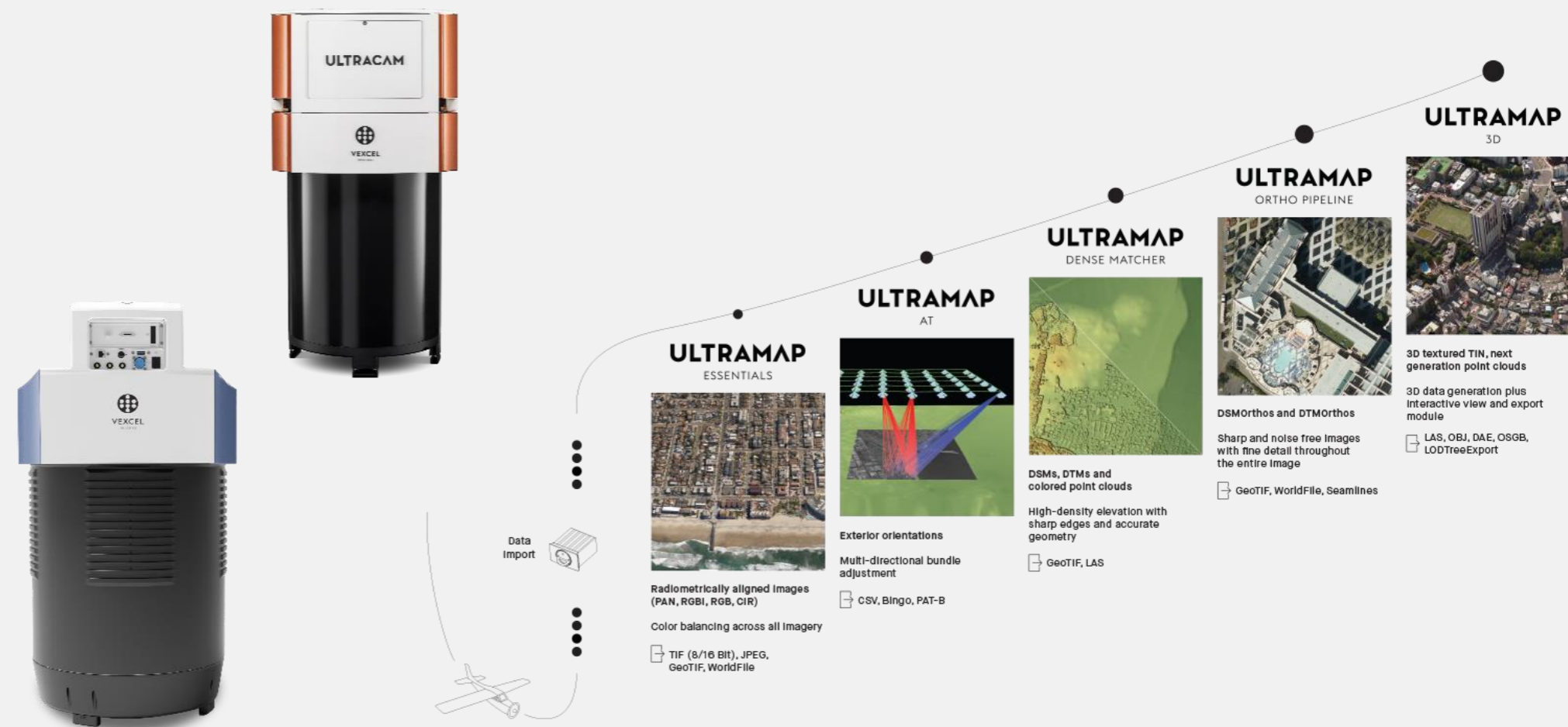
Outstanding data powered  
by „UltraCam“

- 2017 & 2018: North America
- 2019: international expansion

Two elements

- Grey sky ... Disaster area collection
- Blue sky ... Nation wide imagery collection

Operated by Vexcel in co-operation with the  
UltraCam customer base (flyer)



# GRAY SKY

## Disaster Response

- GIC Responds to every major catastrophe in the United States
- Imagery is available to members within 24 hours of collection
- Free access for 1<sup>st</sup> Responders
- Best possible resolution



# Camp Fire and Woolsey

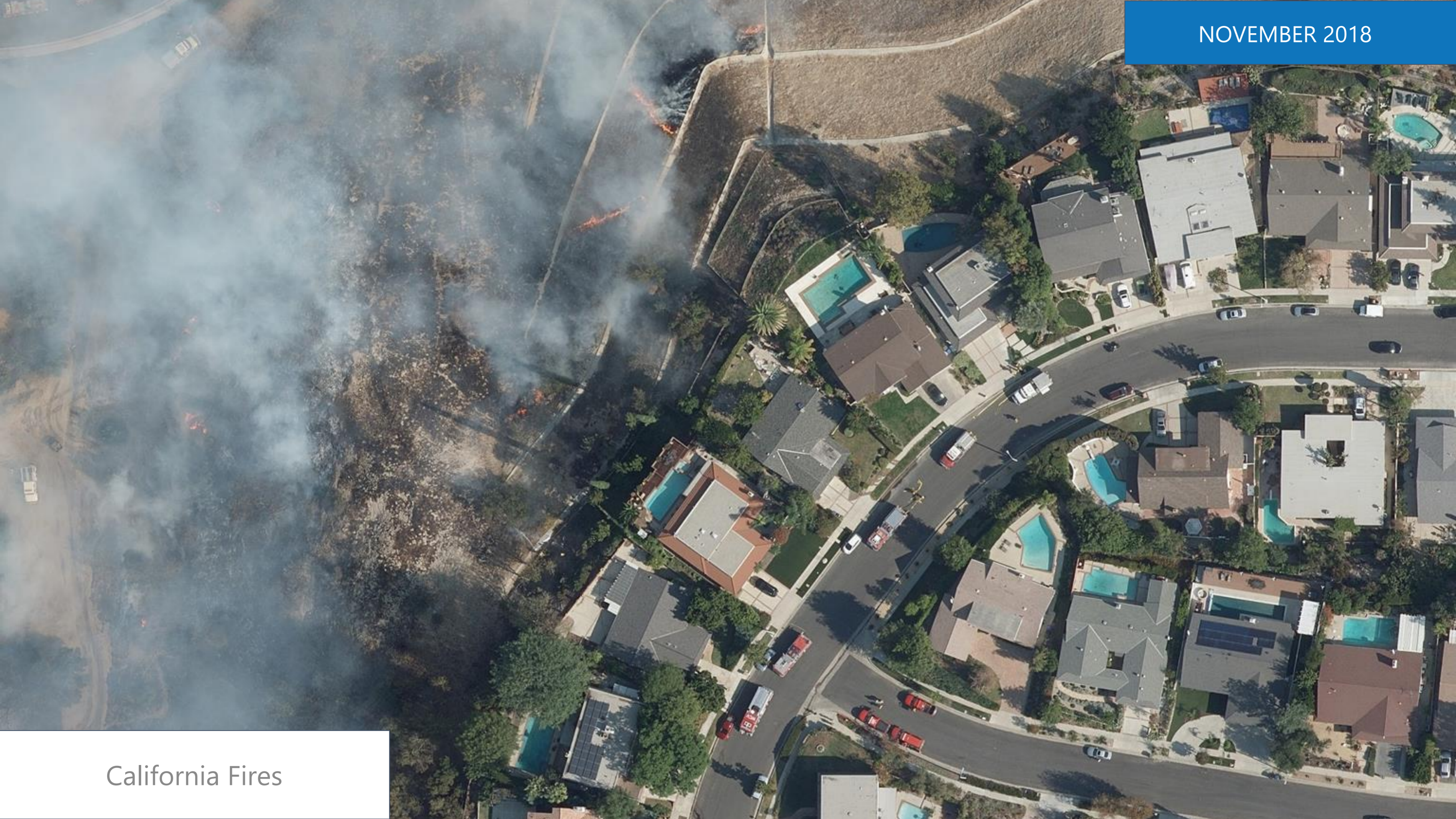
November 2018

- Over 2,500 sq. km. of imagery
- Flown during active flight restrictions



NOVEMBER 2018

California Fires



# Hurricane Michael

October 2018

- 85,000 sq. km. collected, processed and delivered in 3 days
- Implemented daily





FEMA



American  
Red Cross



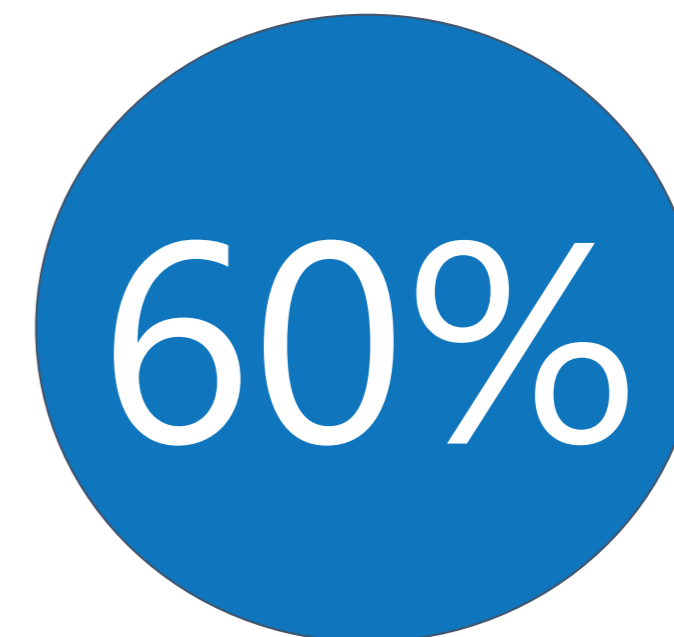
US Army Corps  
of Engineers®



An important mission of the VDP is to have **the insurance industry lead the way** in improving response and relief efforts following disasters, and reducing FRAUD after major events.

VDP is doing this by **transforming how critical information and imagery is collected and disseminated**, driving a coordinated effort across local, state and federal agencies and responders.

VDP also aims to **increase public awareness** of these important initiatives, and in doing so improve the perception of the insurance industry's positive impact when it matters most

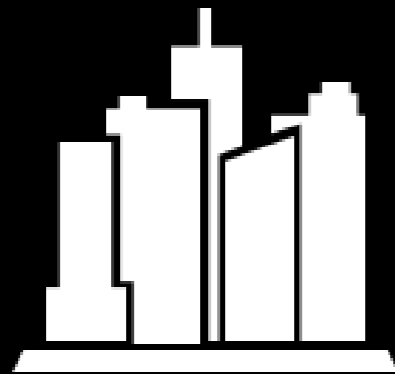


Currently for the CA wildfires, FEMA and the National Guard calculate that the VDP Imagery has been the definitive source in 60% of the overall damage assessment and response.

# BLUE SKY

## ANNUAL IMAGERY

---

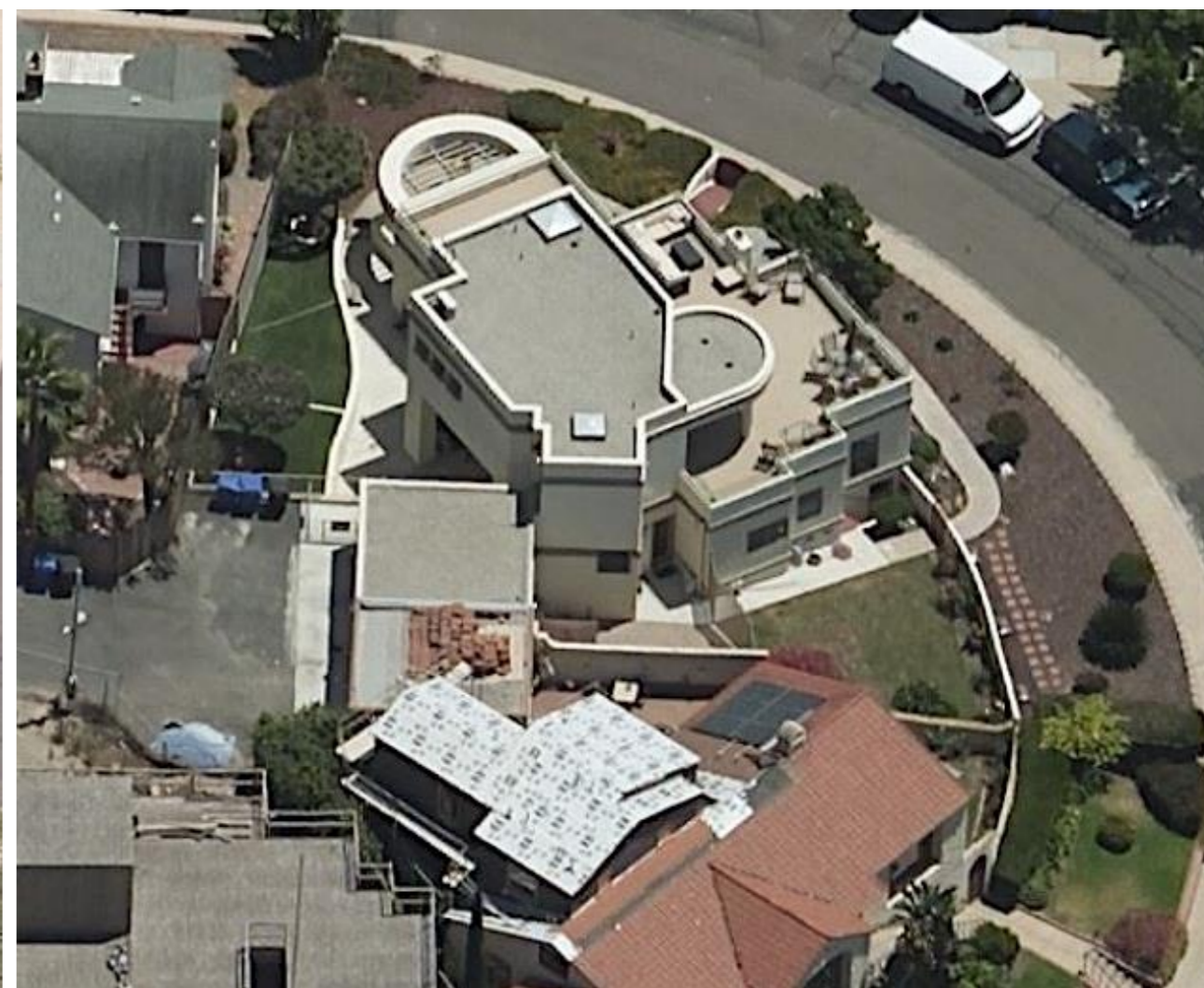
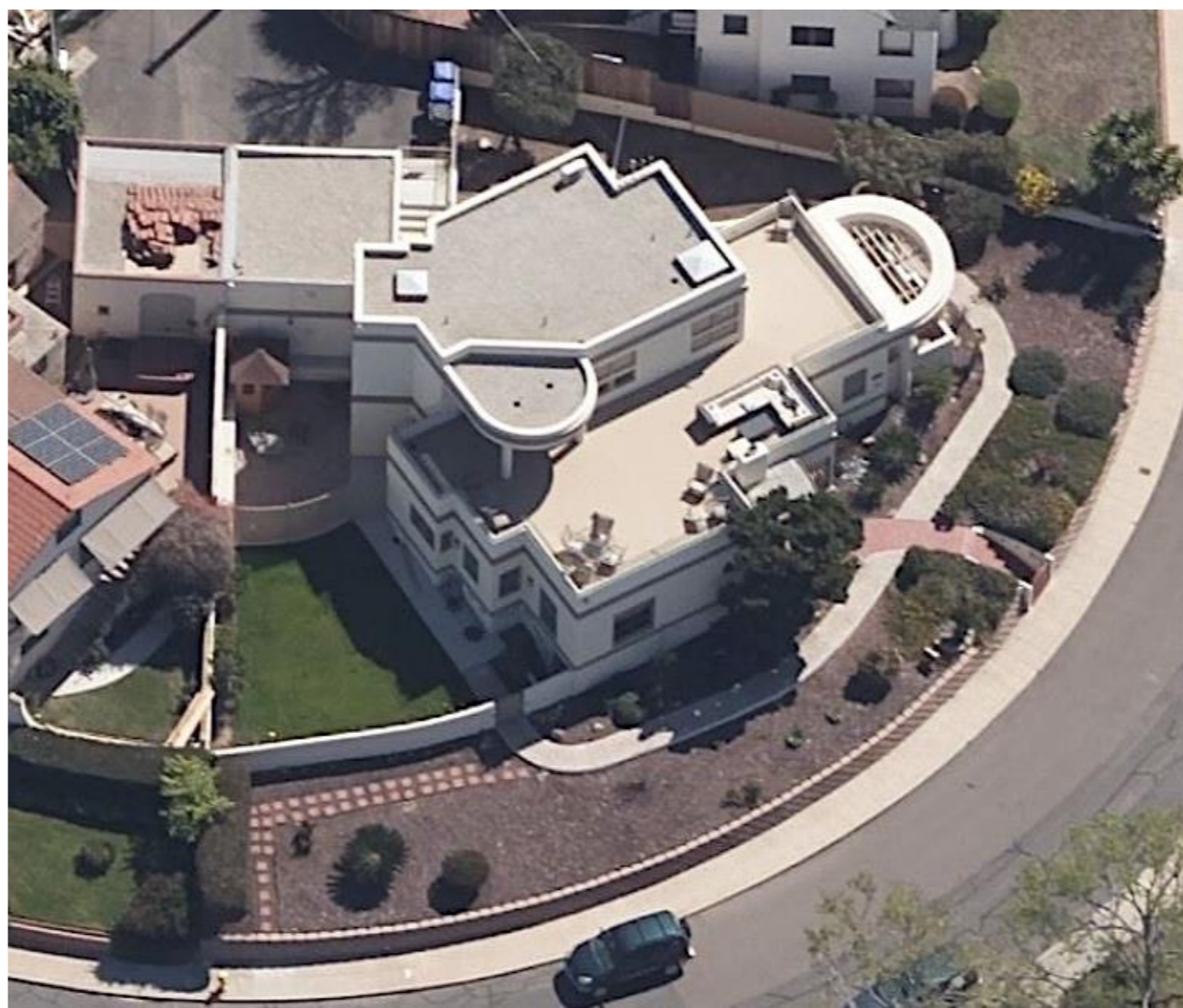
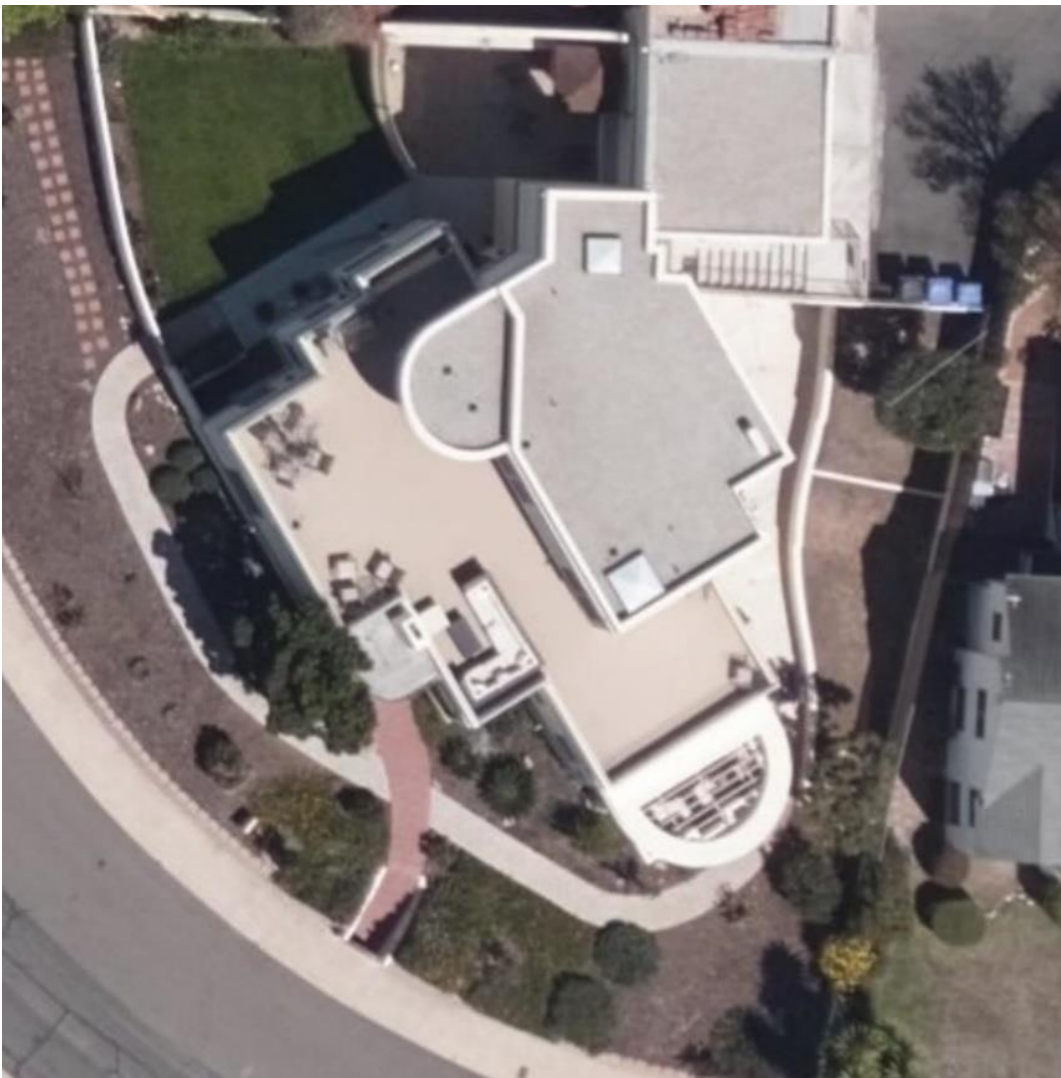


### **Metro Maps:**

- Ultra-high-resolution imagery and data @ 7.5cm resolution repeated annually.
- Coverage includes top metro areas = 75% of the US population.
  - 360-degree aerial imagery
  - 5 views of a property



360 DEGREE VIEW  
for >90% of all US  
homes



# BLUE SKY

## ANNUAL IMAGERY

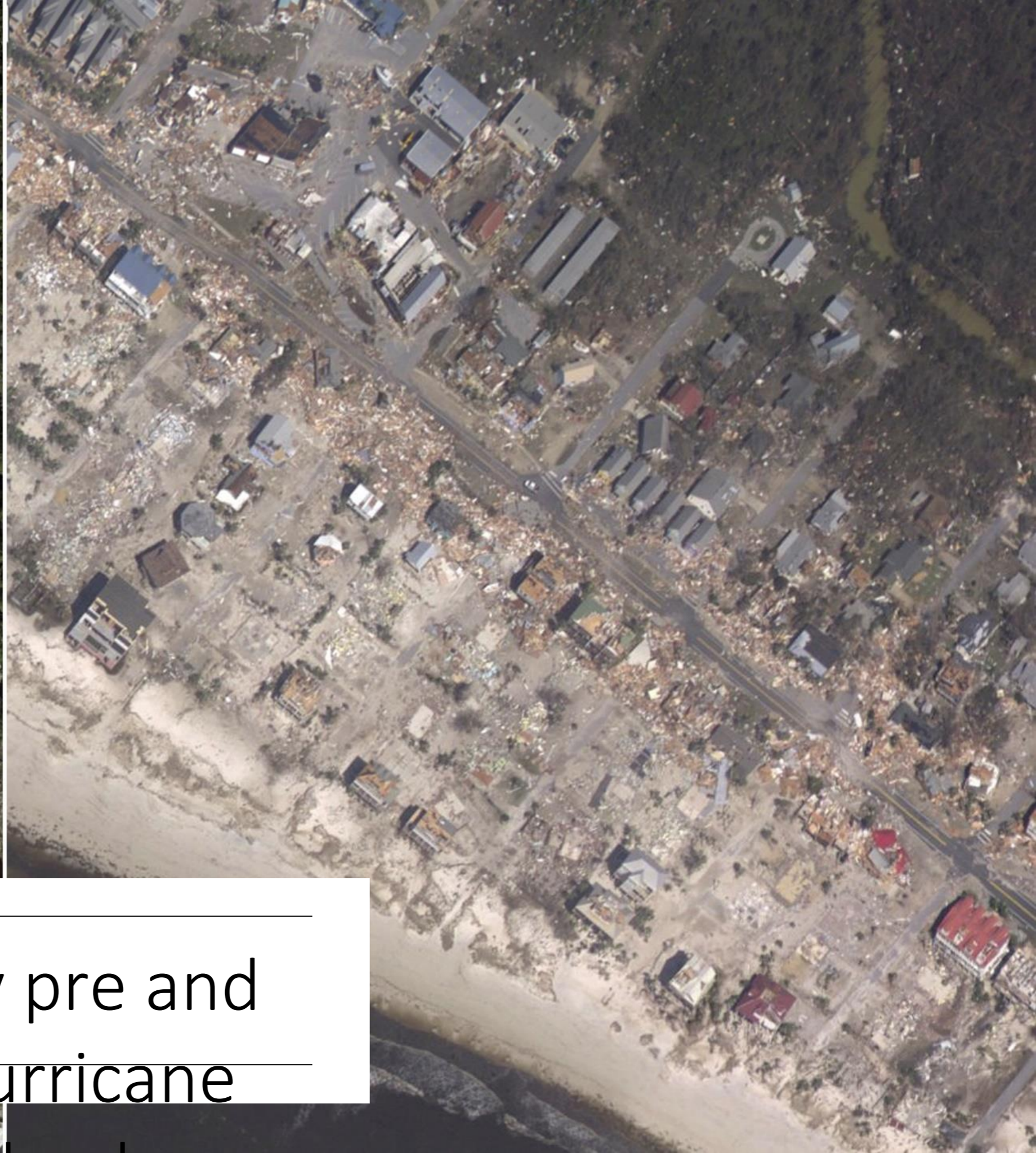
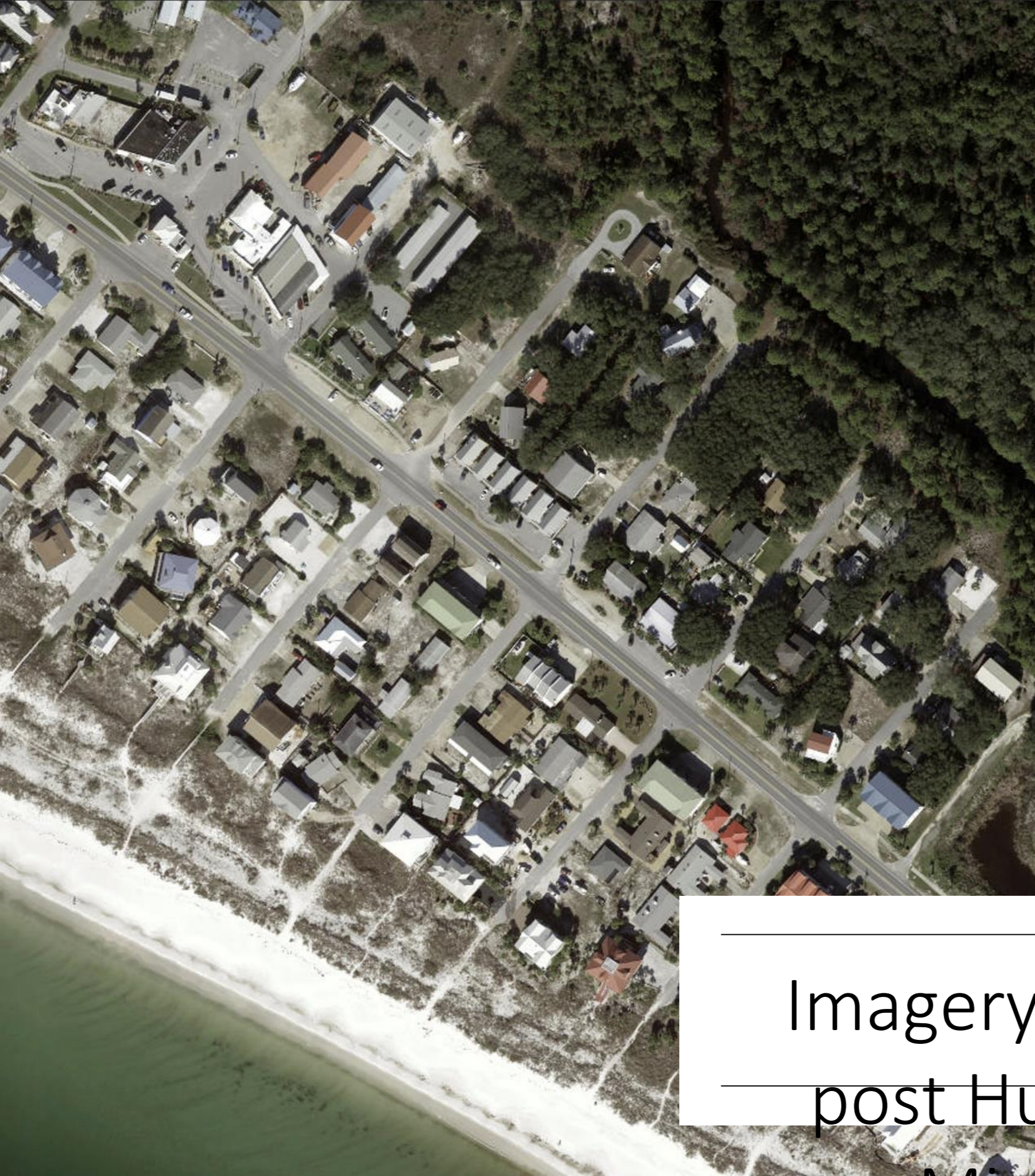
---



### **NATIONAL MAPS:**

Entire US, coast-to-coast, in high-resolution imagery @ 20 cm resolution over a two-year collection period.





Imagery pre and  
post Hurricane

POLICY

70012323  
Henry Roberts

25562 Vio Road  
San Juan, CA 92675

[Show policy details](#) | [Adjust address](#)

CLAIM

0575199720101033  
2018-10-26 - 13:52

Client claims that recent storm damaged roof  
Of the house and needs full replacement

[Show full claim](#) | [Attachments](#)

ROOF DAMAGE

0% 20% 60% 80% 100%

Cannot detect any roof damage

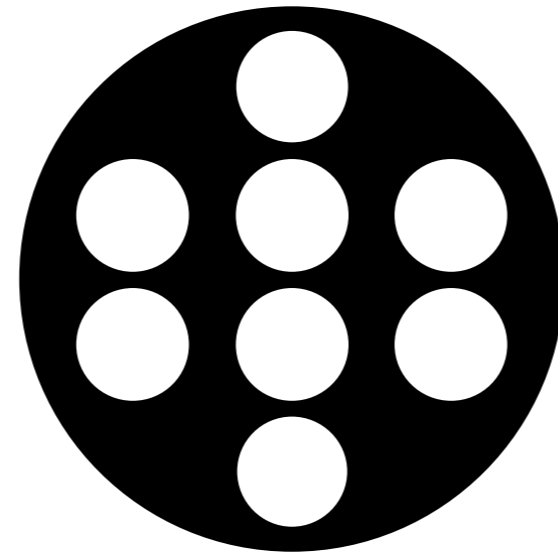
MARK AS

- ☐ Onsite inspection needed
- ☐ Elevate to supervisor
- ☒ Potential fraud
- ☐ Unable to assess at this time

Share

Back





**VEXCEL**

IMAGING