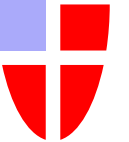


# Vienna Sewage System



# Content

- Vienna sewage system
- Sewer management control system
- Water pollution control
- Protection from surface flooding

# Vienna sewage system



# Vienna sewage system



Lerchenfelder  
Straße,  
13.05.2010

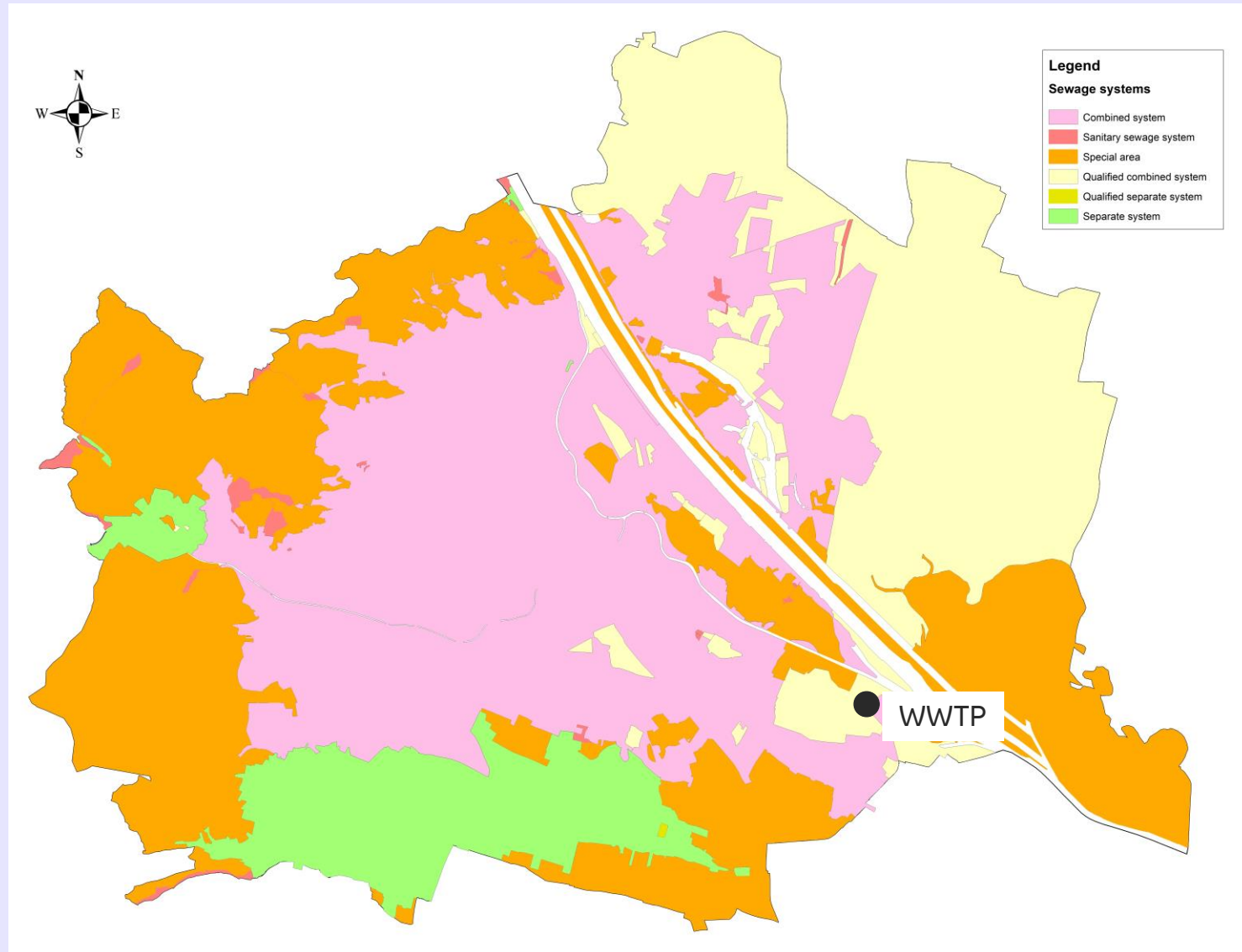
# Vienna sewage system

- Mostly combined sewer system and qualified combined system
- Small part separate sewer system
- Length: about 2.500 km
  - About 540 km possibility of walking through
- Sewer catchment area about 280 km<sup>2</sup>
- Connection to sewer about 99%
- But still about 5.000 private septic tanks

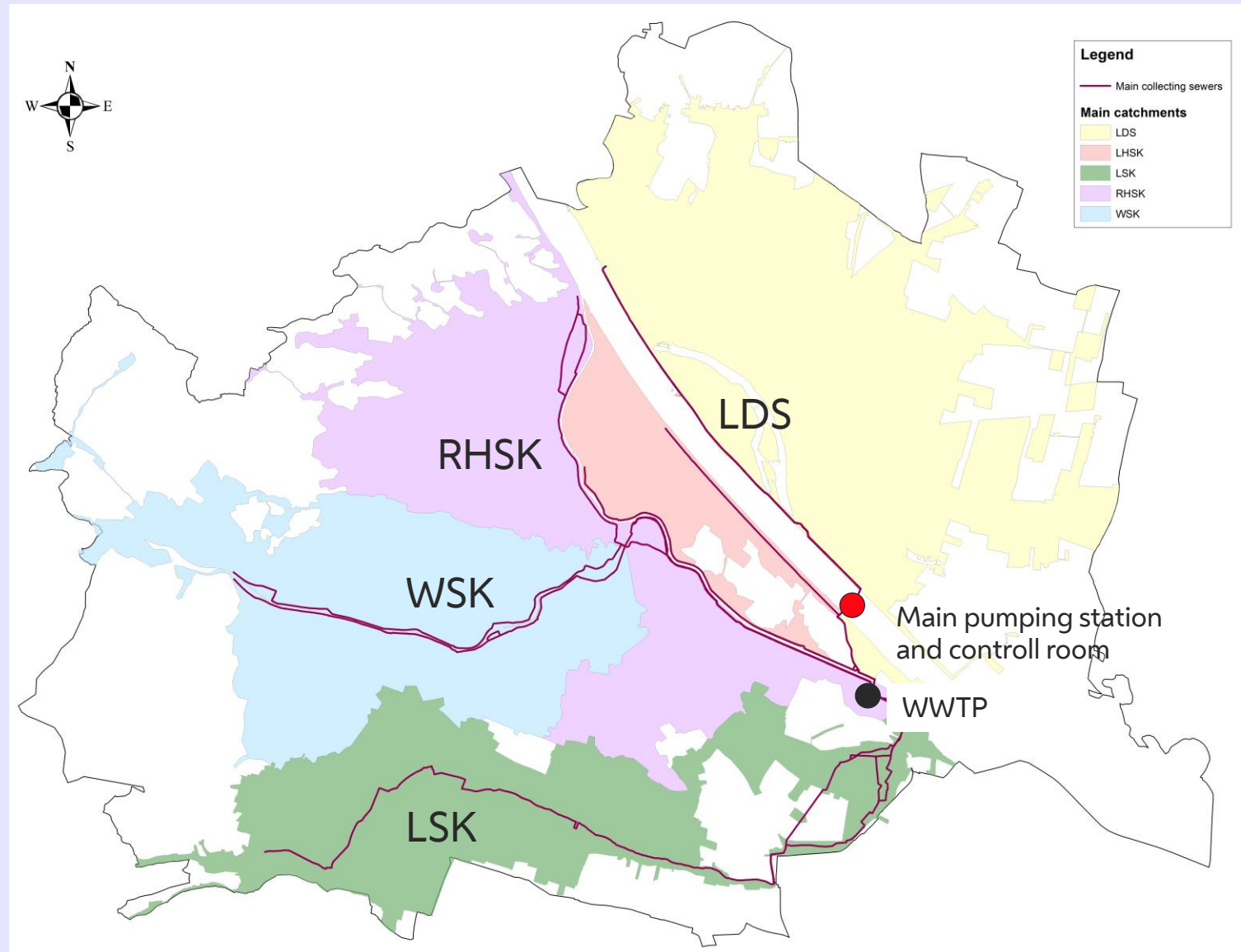
# Vienna sewage system

- About 500 technical structures like pumping stations, combined sewer overflows, movable weirs and slides etc.
- About 300 measuring stations
- One waste water treatment plant (WWTP)
  - Treatment capacity 4 million population equivalent
- Dry weather flow to WWTP on average
  - 500.000 m<sup>3</sup> per day
  - 7 m<sup>3</sup>/s (varying between 2,5 and 9,5 m<sup>3</sup>/s)
- Storm water flow to WWTP maximum
  - 18 m<sup>3</sup>/s

# Vienna sewage system



# Vienna sewage system



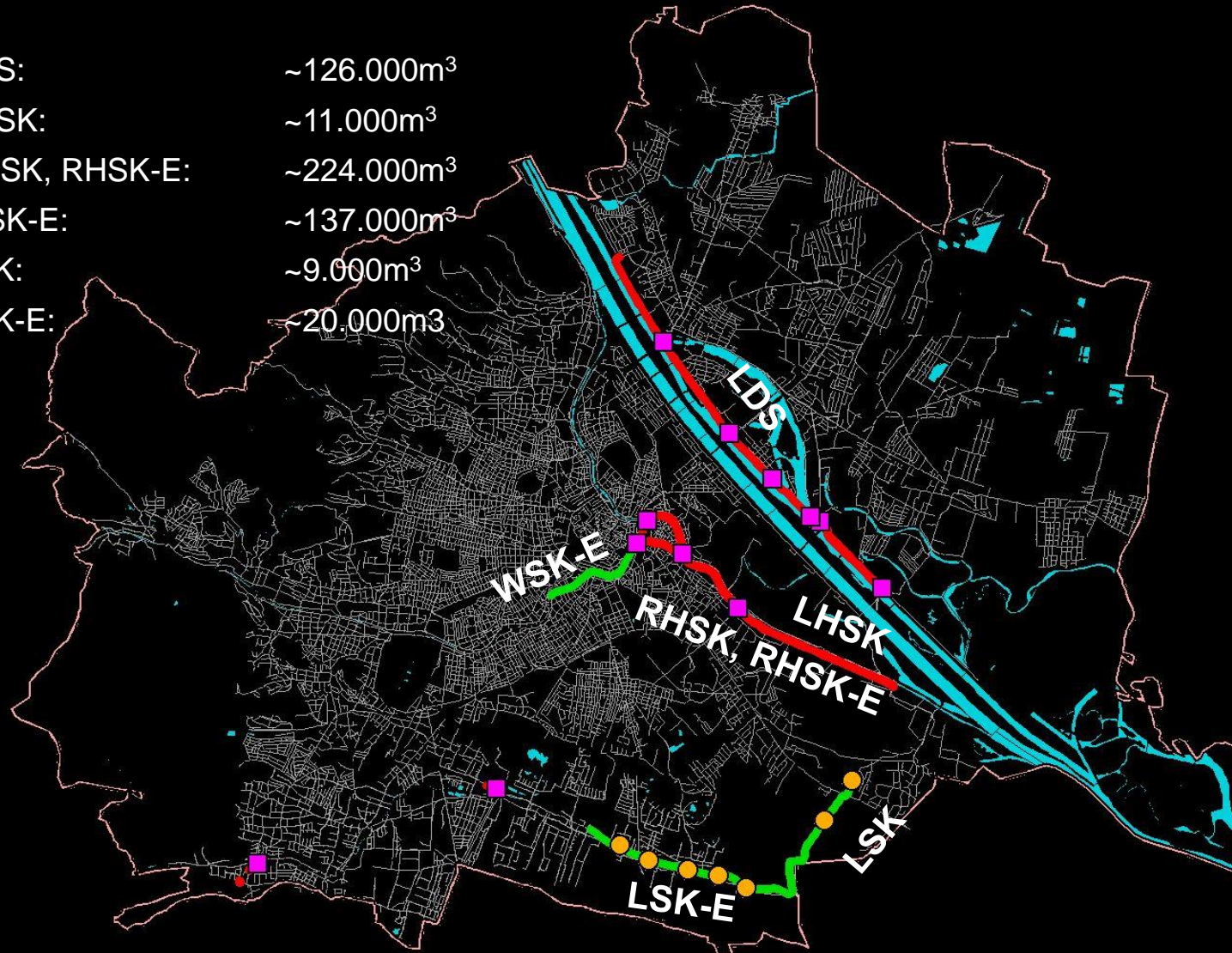


# Vienna sewer management

- Two main goals:
  - Protection from surface flooding
  - Water pollution control
- Using the storage capacity of the main collecting sewers
  - Storage level
  - Remote controlled
- Storage basins and storage sewers
- Limitation of storm water discharge to sewers
  - Percolation of rainwater on private property
  - Limited discharge using a throttle control

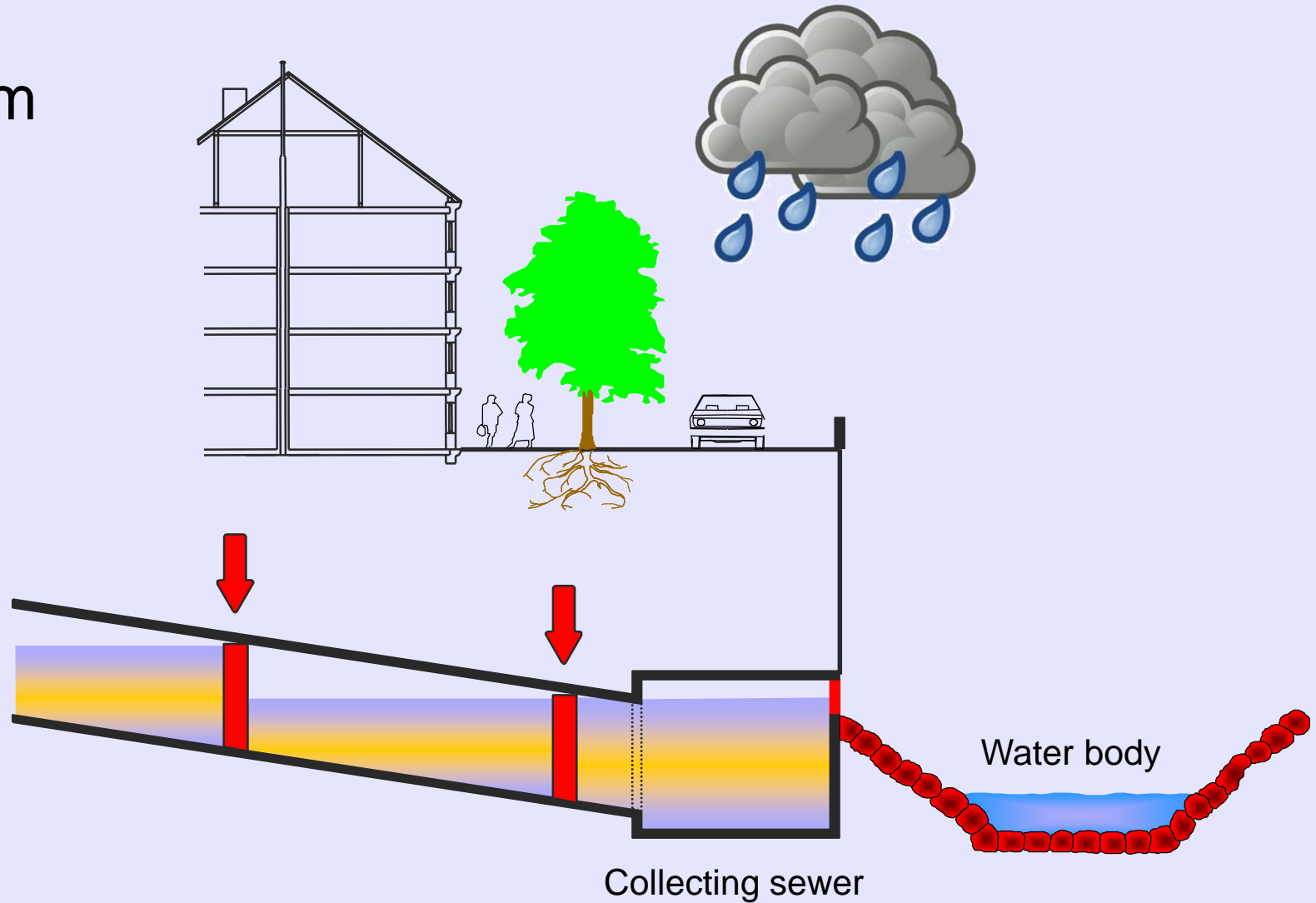
# Vienna sewer management

LDS:	~126.000m <sup>3</sup>
LHSK:	~11.000m <sup>3</sup>
RHSK, RHSK-E:	~224.000m <sup>3</sup>
WSK-E:	~137.000m <sup>3</sup>
LSK:	~9.000m <sup>3</sup>
LSK-E:	~20.000m <sup>3</sup>

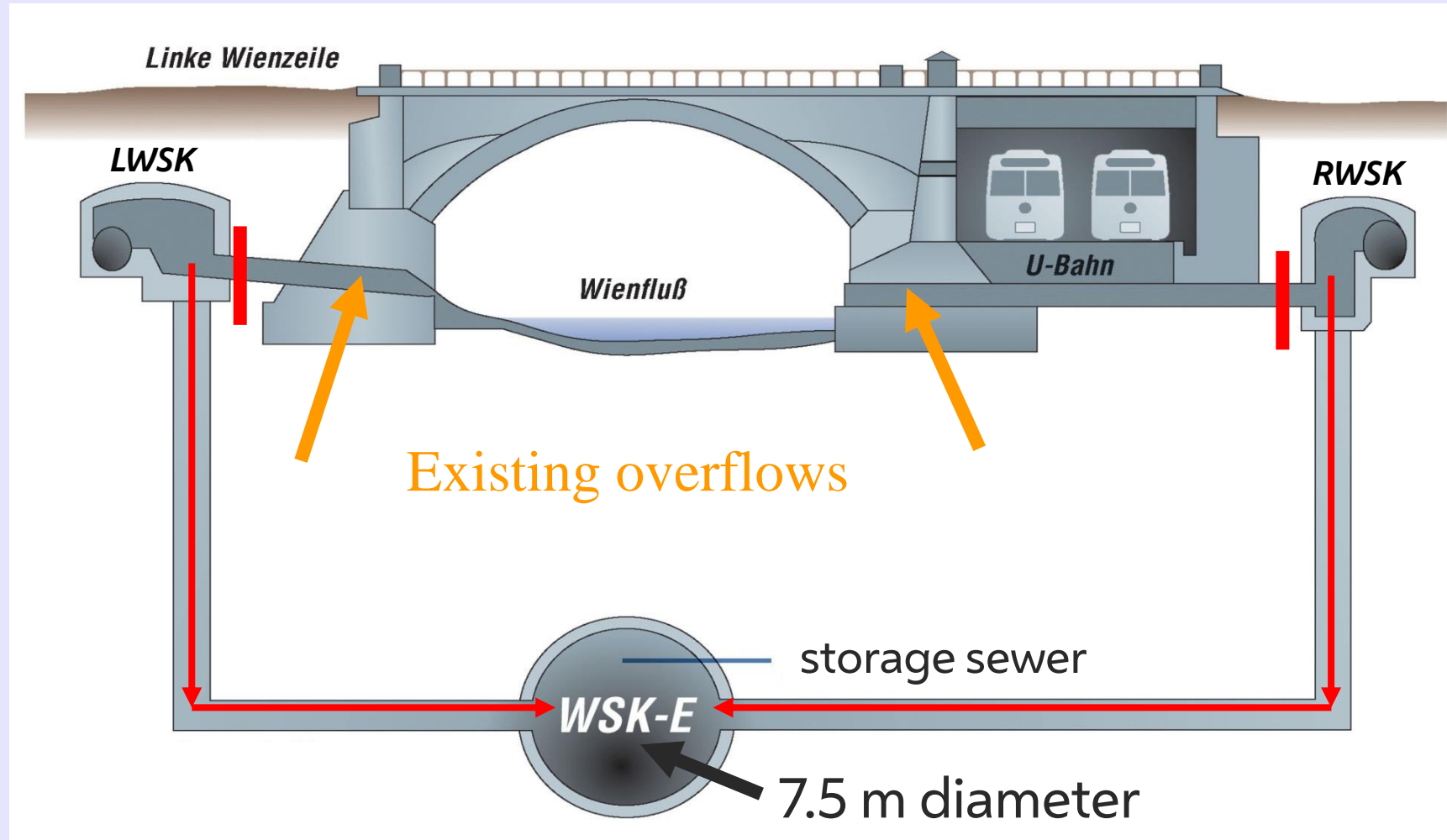


# Vienna sewer management

Controlled system

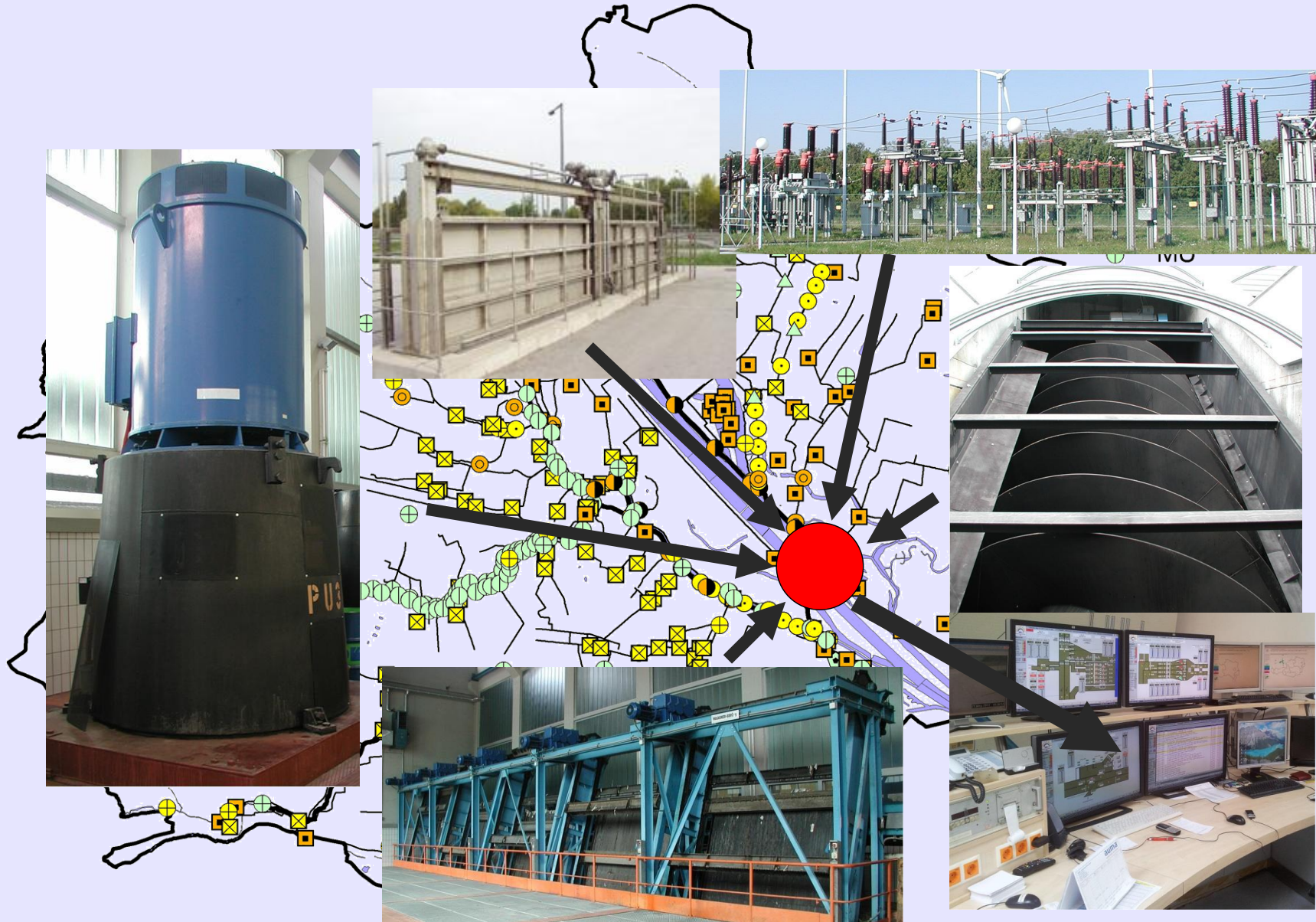


# Vienna sewer management



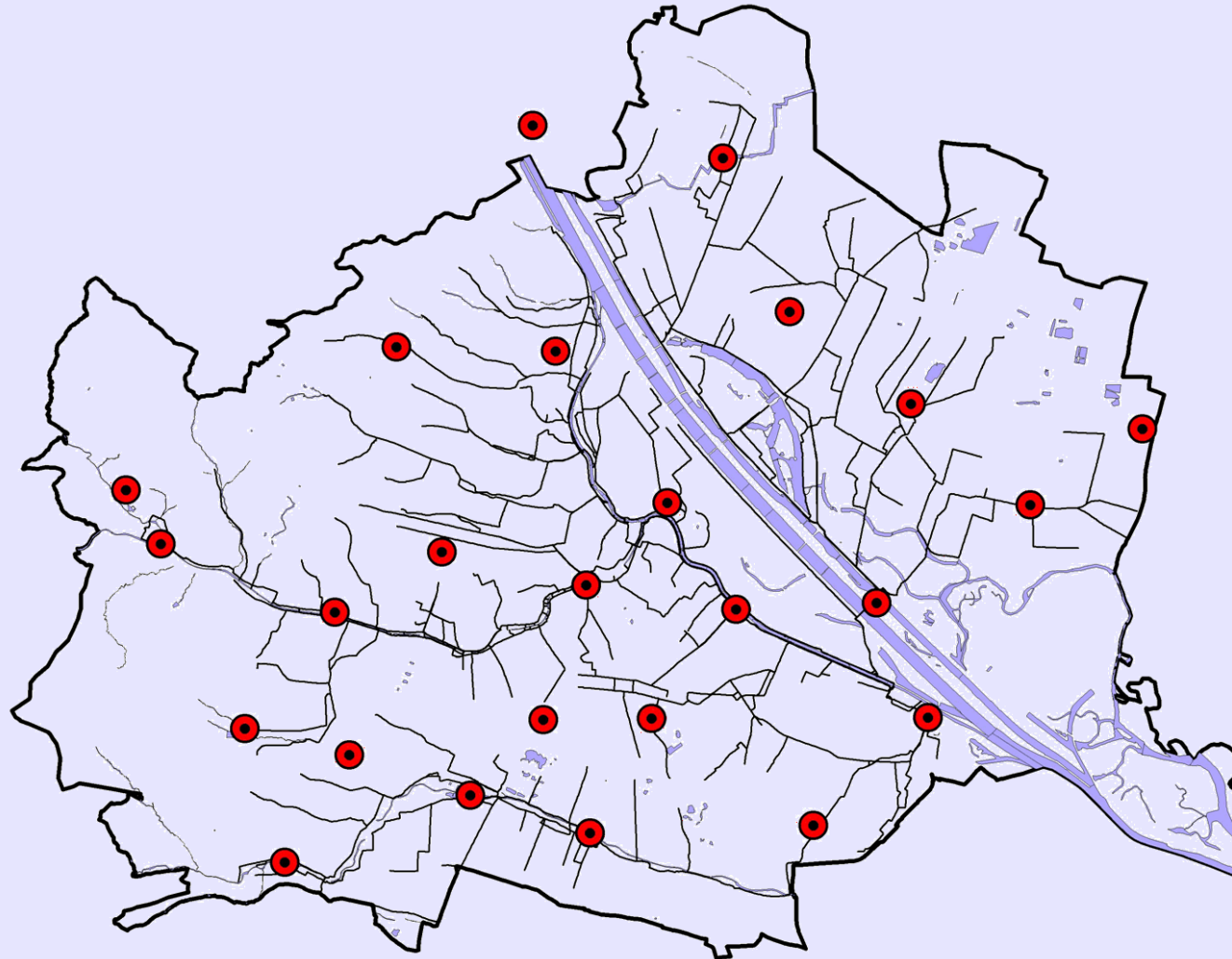


# Vienna sewer management



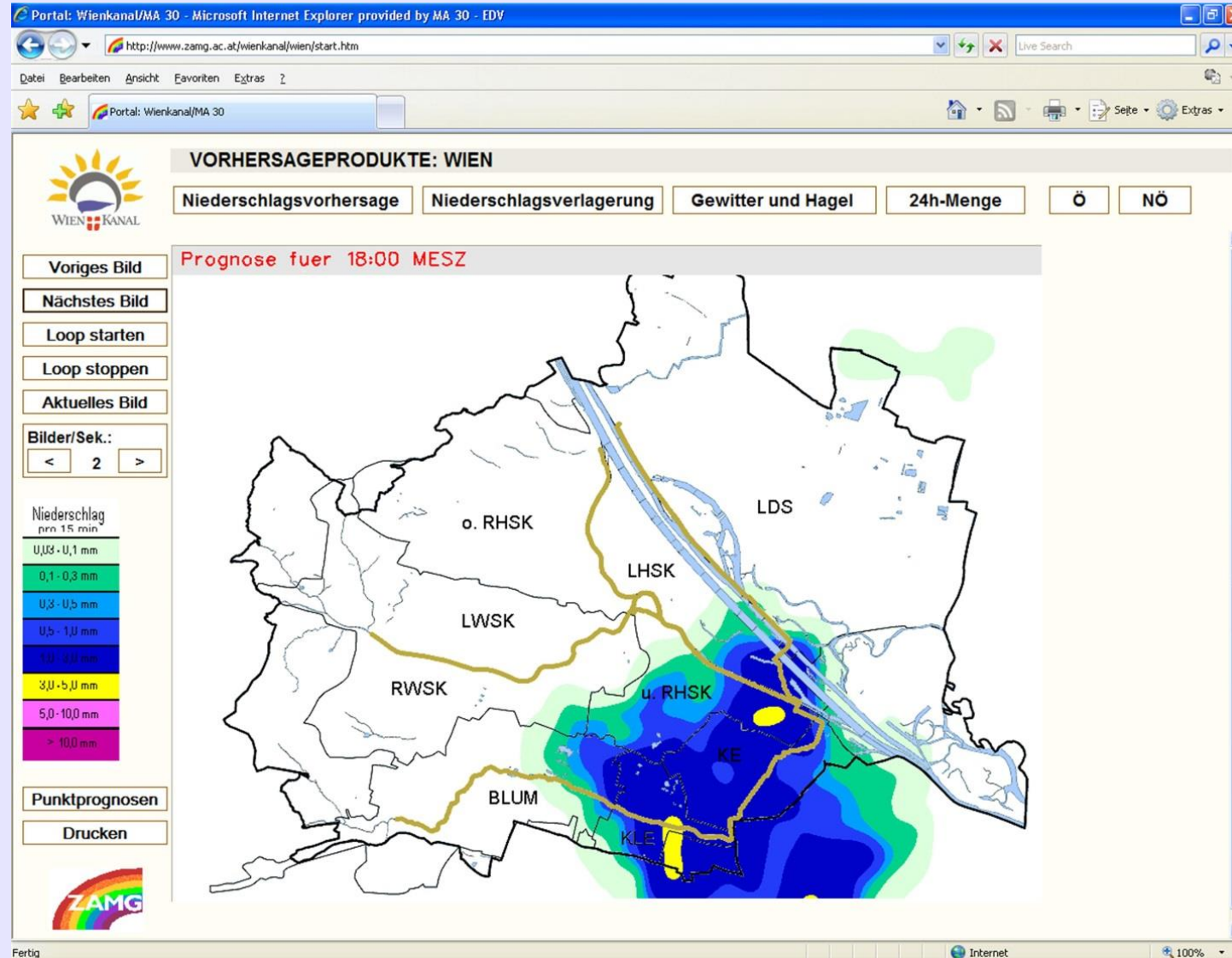
# Vienna sewer management

Precipitation  
measuring



# Vienna sewer management

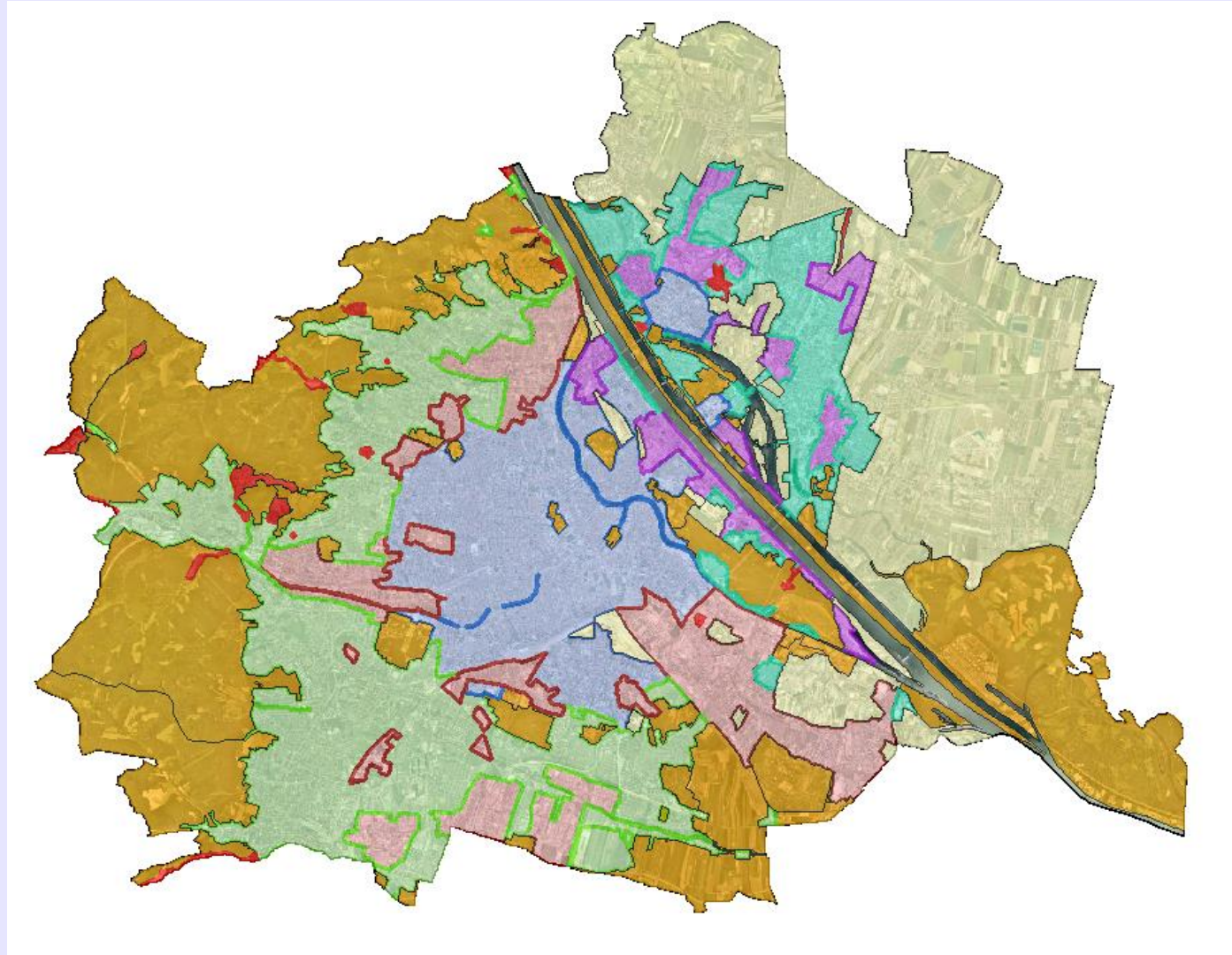
Weather  
forecast





# Vienna sewer management

Different  
zones of  
limitations for  
storm water  
discharge to  
sewers





# Vienna sewer management



# Thank you for your attention !

Thilo Lehmann  
Vienna sewage department  
[thilo.lehmann@wien.gv.at](mailto:thilo.lehmann@wien.gv.at)

