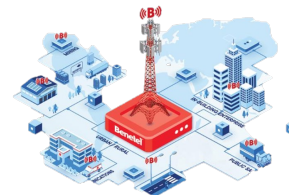


## BENETEL INTRODUCTION



**6M+ BENETEL DESIGNED RADIOS  
DEPLOYED AROUND THE WORLD**

### INTRODUCTION

An Irish Telecom Company for 20+ years in Business, with Extensive Experience in Design & Deployment of Small Cell Base Stations

### LEADING-EDGE TECHNOLOGY

Delivering 5G O-RAN Split 7.2x Cat-A and Cat-B Radio Units (O-RUs), Optimized to Meet Growing Industrial and Private Network Needs

### AWARD WINNING CONTRIBUTIONS

Award-Winning Contributions to Open RAN Platforms and Ecosystems for Outstanding Innovation and Development of Small Cells and Radios

### COLLABORATION

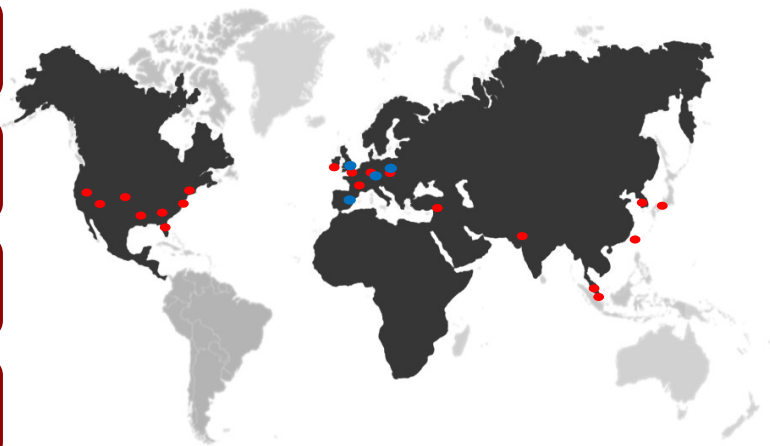
ORAN Alliance, SONIC Lab, OTIC Labs, NTIA, Intel, PlugFest, Multiple Industry Partners

### INNOVATION

Extending the Existing RU Platform with New Feature Sets Optimized for Enhanced Performance, Security, Compliance with 3GPP & O-RAN Standards

### STRATEGY

We are Open & Deeply Engage with O-CU/O-DU Partners around the World



● Live / Commercial networks

● POCs / Trials

**5G O-RAN RUs GLOBAL DEPLOYMENT MAP**

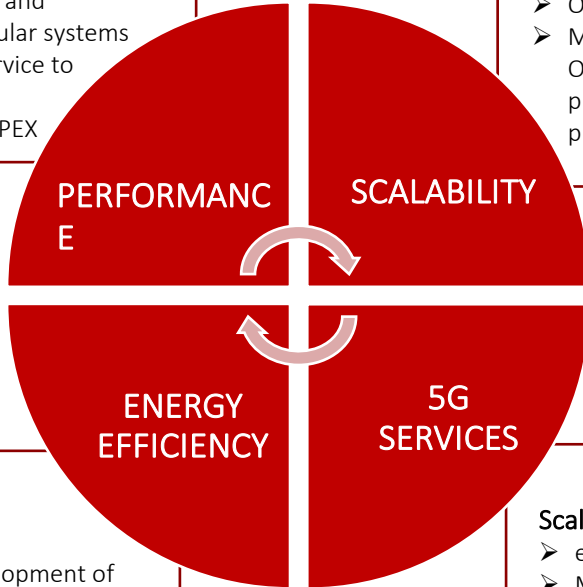
# BENETEL OFFERS A RANGE OF SCALABLE 5G SERVICES

## Real time reporting KPIs to the SMO via M-Plane

- enables monitoring and optimization of cellular systems
- better quality of service to customers
- reduces OPEX & CAPEX

## Modular, Scalable, SWaP-Optimized Solutions

- Optimizing time-to-market
- Minimizing Total Cost of Ownership (TCO) for private and public sector communications providers and OEMs



## Energy Saving

- Engaged in the development of techniques to optimize radio energy efficiency

## Scalable 5G Services

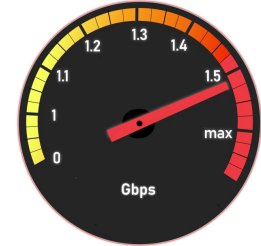
- eMBB
- Mission-Critical Services (uRLLC)
- Massive IoT
- Network Slicing



Indoor O-RU-RAN550



Outdoor O-RU-RAN650



Excellent 5G Gb performance

1<sup>st</sup> Prize in NTIA 5G Challenge

## O-RAN Compliant

Fronthaul Split 7.2a/b

NR Bands: n77u, n78, n79, n48

Multiple partner integrations (L1, L2, L3)

4T4R, up to 100 MHz BW

# BENETEL CONTACT

Benetel expresses a strong interest in engaging with the CEF and seeks to collaborate as an O-RU partner/supplier within a consortium.

Benetel`s Dublin HQ runs a state-of-the-art 5G laboratory for test, support, research and development. Our other global locations include offices in UK, USA and Japan as well as R&D center in Poland.

Address: BENETEL LTD.

GEC, Taylor`s Lane,  
D08 F9 FV, Ireland

Tel: +353 1 410 0890

Contacts: [johndoyle@benetel.com](mailto: johndoyle@benetel.com)

[pooriavarahram@benetel.com](mailto: pooriavarahram@benetel.com)

Website: [www.benetel.com](http: www.benetel.com)

