



Digital tools for precision oncology

Robert Doczi PhD, Head of Research
robert.doczi@oncompassmedicine.com

Oncompass Medicine (SME)
Hungary
<https://oncompassmedicine.com/>

The case for digital drug assignment in precision oncology

- Cancers harbor multiple drivers (4-5), and the efficacy of most drugs is influenced by multiple predictive parameters.
 - Low concordance of treatment recommendations by MTBs based on the same molecular test results*
 - Single biomarker paradigm → Multi-parametric approach
- + Limited access to expertise provided by MTBs in remote regions and nonacademic centers

* e.g. [Rieke et al. 2018](#), [Kage et al. 2021](#), [Rieke et al. 2020](#)

Multiparameter-based digital drug-assignment for treatment planning in precision oncology

RealTime Oncology Treatment Calculator

Tumor type, molecular alterations
(SNV, CNV, TMB, MSI, IHC, FISH)

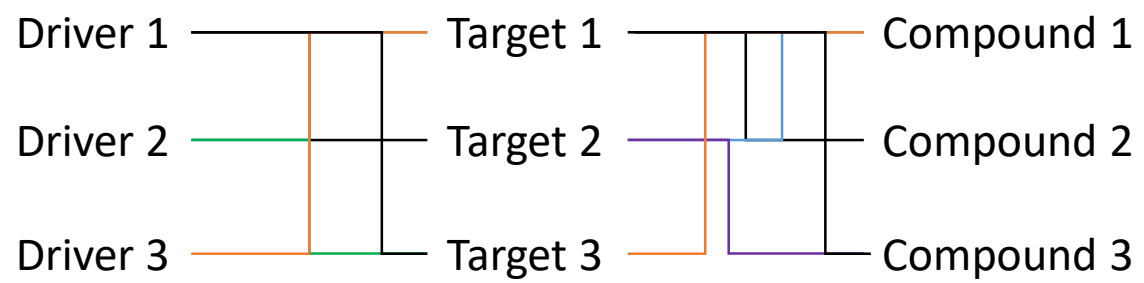
Any NGS Panels e.g. FMI reports



**Personalized,
prioritized list of
compounds**

- ✓ Explainable
- ✓ Evidence-based
- ✓ Reproducible

Evidence-based network
of associations and
algorithms



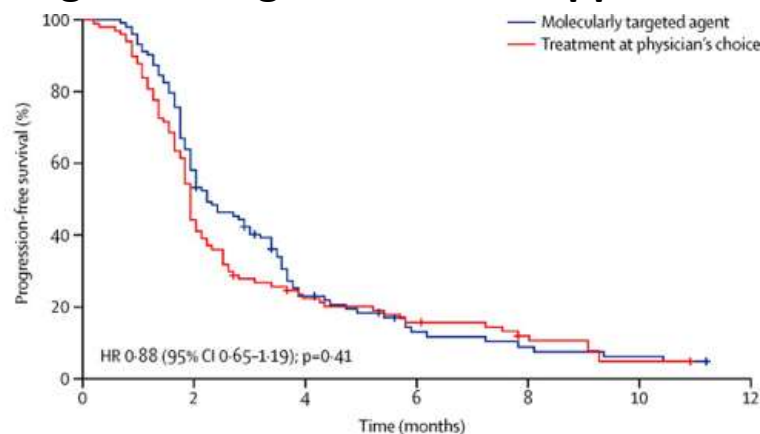
AEL **Aggregated Evidence Level**



represents the number,
scientific impact and clinical
relevance of evidence
relations connecting tumor
types, molecular alterations,
targets and compounds

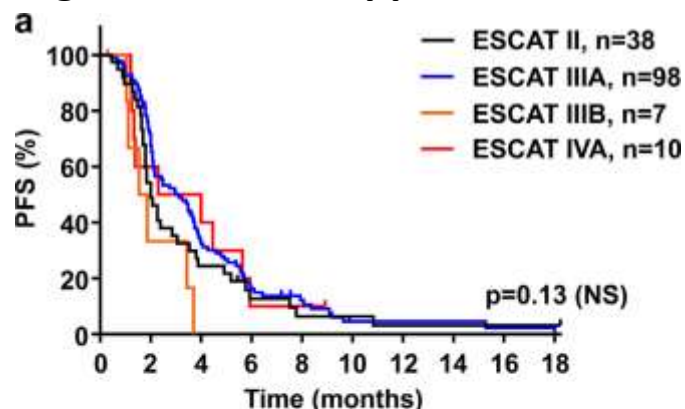
Validation by SHIVA01 clinical trial data

Original – single biomarker approach by picking

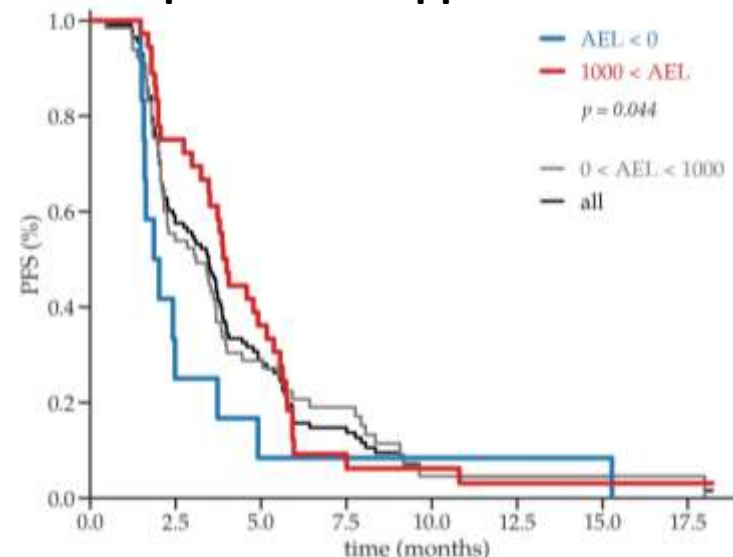


[Le Tourneau et al. Lancet Oncol. 2015 Oct;16\(13\):1324-34.](#)

Reanalysis by ESCAT categories - single biomarker approach



RealTime Oncology TC – multiparametric approach



[Petak et al. NPJ Precis Oncol. 2021 Jun 23;5\(1\):59.](#)

Patients with high AEL treatment had longer PFS

**RealTime Oncology Treatment Calculator
a reporting method that correlates with outcome**

[Moreira et al European Journal of Cancer, Volume 121, 202 – 209. 2019](#)

Utility of RealTime Oncology today



Winner of DIGITALEUROPE's

Future Unicorn Award:

The most promising European technology company with a future value of more than \$ 1 billion.



Winner of the GET IN THE RING Global
Start Up competition,
Health category 2020/21



- **Decision between treatment options at the same evidence level**
(e.g. with same ESCAT category)
- **Decision between multiple on-label molecularly targeted agents registered in the same indication**
- **Decision between off-label molecularly targeted agents at the same evidence level**
(e.g. salvage therapy, pediatric cancers in combination with chemotherapy)

**Utility is increasing with new approvals,
and with the increasing complexity of input data.**

Our expertise is digital tools for precision oncology

Oncompass develops an end-to-end workflow for precision oncology. We seek partners interested in developing new molecular diagnostic tools, bioinformatic solutions.

We can contribute with **our proprietary AI system for targeted therapy matching**. This system enables multiparameter-based digital drug-assignment for treatment planning in precision oncology.

HORIZON-MISS-2023-CANCER-01-03: Pragmatic clinical trials on minimally invasive diagnostics

HORIZON-HLTH-2023-IND-06-07: Development and harmonisation of methodologies for assessing digital health technologies in Europe

HORIZON-HLTH-2023-IND-06-04: Modelling and simulation to address regulatory needs in the development of orphan and paediatric medicines

HORIZON-HLTH-2023-TOOL-05-04: Better integration and use of health-related real-world and research data, including genomics, for improved clinical outcomes

HORIZON-HLTH-2023-TOOL-05-03: Integrated, multi-scale computational models of patient patho-physiology ('virtual twins') for personalised disease management

HORIZON-HLTH-2023-IND-06-02: Expanding the European Electronic Health Record exchange Format to improve interoperability within the European Health Data Space

HORIZON-HLTH-2023-TOOL-05-05: Harnessing the potential of real-time data analysis and secure Point-of-Care computing for the benefit of person-centred health and care delivery

HORIZON-MISS-2023-CANCER-01-04: Establish best practices and tools to improve the quality of life for childhood cancer patients, survivors and their families in European regions

HORIZON-MISS-2023-CANCER-01-01: Addressing poorly-understood tumour-host interactions to enhance immune system-centred treatment and care interventions in childhood, adolescent, adult and elderly cancer patients