



İSTANBUL PROJECT ACADEMY



MARMARA ÜNİVERSİTESİ
İNNOVASYON VE TEKNOLOJİ
TRANSFER UYGULAMA VE
ARAŞTIRMA MERKEZİ





Health Care
Doctor
Hospital
Pharmacist
Nurse
Dentist
First Aid
Surgeon
Emergency



MEDICAL



MEDICAL



MEDICAL

Horizon Europe Cluster 1: Health Brokerage Event



Organisation Name:

Project Idea / Field of Expertise :

Addressed Topic(s) & Call(s):



- **Marmara Üniversitesi – VeNIT Research Lab**
- **BigTRI Bilişim A.Ş.**

- **AI/ML, Image Processing**
 - Real-time processing, anomaly detection, failure detection
- **IoT, Networking, Edge Computing, Cyber-physical Systems**
 - Communication Reliability, Service Availability, Security

HORIZON-HLTH-2023-STAYHLTH-01-01

HORIZON-HLTH-2024-STAYHLTH-01-05-two-stage

HORIZON-HLTH-2023-DISEASE-03-07

HORIZON-HLTH-2023-CARE-04-02

HORIZON-HLTH-2023-CARE-04-03

HORIZON-HLTH-2023-TOOL-05-04

HORIZON-HLTH-2023-TOOL-05-05

HORIZON-HLTH-2023-TOOL-05-08





MARMARA
ÜNİVERSİTESİ



VeNIT

www.venit.org



Largest University in Turkey

Most successful University in H2020-ECSEL/HE KDT calls (Turkey)

HORIZON EUROPE:

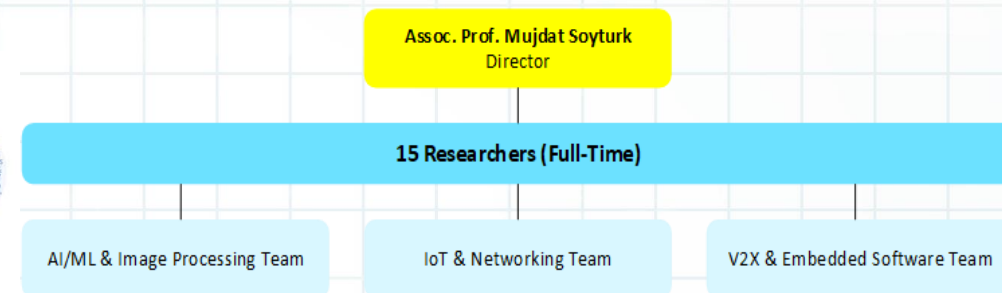
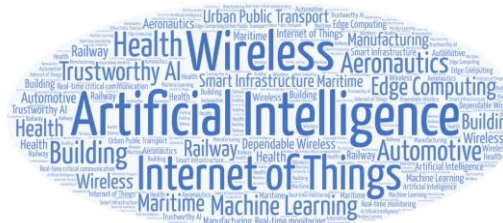
- [DECICE](#)

HORIZON EUROPE – KDT JU:

- [BRIGHTER](#) (Country Coordinator)
- [LoLiPoP-IoT](#) (Country Coordinator)

H2020-ECSEL JU:

- [iRel4.0](#) (Country Coordinator)
- [InSecTT](#) (Country Coordinator)
- [BEYOND5](#)



TRI

3rd most successful SME in Horizon Europe (in Turkey)

BigTRI Bilişim A.Ş.



Connected Cars / V2X Digital Twin

"Connected Cars/V2X Digital Twin" includes full stack functionality (ITS-G5, DSRC, V2X applications and other vehicle component interfaces) for V2X communication to contribute to various scenarios. The platform allows the integration of real/artificial vehicle traffic to generate realistic mobility patterns. It enables large scale testing of the scenarios. The platform also communicate with external entities such as real vehicles and the infrastructure.



VeNIT

www.venit.org



TRI

BigTRI Bilişim A.Ş.



Research & Development

Research & Development
Integration
Exploitation / Outreach



**İSTANBUL
PROJE
AKADEMİSİ**

Our project idea / expertise

Expertise

- AI & ML
- Edge Computing
- V2X Communication
- Image Processing
- IoT/Networking

Implementation Areas:

C-ITS, Connected Cars, Digital Industry, Digital Society, Smart Factories, Health, Manufacturing, Retail, Energy, Agriculture

Demonstrations

Real site & environment demonstrations

TEST & VERIFICATION & VALIDATION

SECURITY & PRIVACY



Related Areas and Calls

- AI/ML based solutions
- Real-time data processing and anomaly detection
- Edge Computing
- Service availability
- Communication Reliability

→ Remote healthcare, Home-care

→ introduce Clinical research with the relevant departments and the hospital

→ Faculty of Dentistry,

→ Faculty of Pharmacy,

→ Faculty of Health Sciences,

→ School of Medicine

→ Hospital of Marmara University



Contact details

Contact person	Mujdat Soy Turk
Organisation	Marmara University – VeNIT Lab
Address	Marmara University, Aydınevler Campus, Faculty of Engineering Dept. of Computer Engineering, Aydınevler, Istanbul
E-mail	mujdat.soyturk@venit.org
LinkedIn/Twitter	https://www.linkedin.com/in/mujdat-soy Turk/ https://www.linkedin.com/company/venit-lab/
Organisation	BigTRI Bilişim A.Ş.
Address	Marmara Üniversitesi, TGB 1. Bölge Teknopark Binası Göztepe Istanbul
E-mail	info@bigtri.net www.bigtri.net
LinkedIn/Twitter	https://www.linkedin.com/company/bigtri/





THANK YOU...



MARMARA ÜNİVERSİTESİ
İNNOVASYON VE TEKNOLOJİ
TRANSFER UYGULAMA VE
ARAŞTIRMA MERKEZİ

