



İSTANBUL PROJECT ACADEMY



Monica FLOREA, Head of Unit European Projects Department

[European R&D Projects](#)



monica.florea@simavi.ro



MARMARA ÜNİVERSİTESİ
İNNOVASYON VE TEKNOLOJİ
TRANSFER UYGULAMA VE
ARAŞTIRMA MERKEZİ





ISTANBUL
PROJECT
ACADEMY



İSTANBUL
CHAMBER OF INDUSTRY



enterprise
europe
network

Business Support on Your Doorstep



MEDICAL

MEDICAL

MEDICAL

Horizon Europe Cluster 1: Health Brokerage Event



Project Idea / Field of Expertise

Organisation Name:

Addressed Topic(s) & Call(s):



Software solutions and services for Health sector / pilot deployment in Romania

Software Imagination & Vision



Software Imagination & Vision

[HORIZON-HLTH-2023-STAYHLTH-01-01: The Silver Deal - Person-centred health and care in European regions](#)

[HORIZON-HLTH-2024-STAYHLTH-01-02-two-stage: Towards a holistic support to children and adolescents' health and care provisions in an increasingly digital society](#)

[HORIZON-HLTH-2023-ENVHLTH-02-02: Evidence-based interventions for promotion of mental and physical health in changing working environments \(post-pandemic workplaces\)](#)

[HORIZON-HLTH-2023-DISEASE-03-01: Novel approaches for palliative and end-of-life care for non-cancer patients](#)

[HORIZON-HLTH-2023-DISEASE-07-01: European Partnership on Rare Diseases](#)

[HORIZON-HLTH-2024-DISEASE-03-11-two-stage: Pandemic preparedness and response: Adaptive platform trials for pandemic preparedness](#)

[HORIZON-HLTH-2024-DISEASE-03-14-two-stage: Tackling high-burden for patients, under-researched medical conditions](#)

[HORIZON-HLTH-2023-CARE-04-01: Maintaining access to regular health and care services in case of cross-border emergencies](#)

[HORIZON-HLTH-2023-CARE-04-02: Resilience and mental wellbeing of the health and care workforce](#)

[HORIZON-HLTH-2023-CARE-04-03: Environmentally sustainable and climate neutral health and care systems](#)

[HORIZON-HLTH-2024-CARE-04-04-two-stage: Access to health and care services for people in vulnerable situations](#)

[HORIZON-HLTH-2023-TOOL-05-03: Integrated, multi-scale computational models of patient patho-physiology \('virtual twins'\) for personalised disease management](#)

[HORIZON-HLTH-2023-TOOL-05-04: Better integration and use of health-related real world and research data, including genomics, for improved clinical outcomes](#)

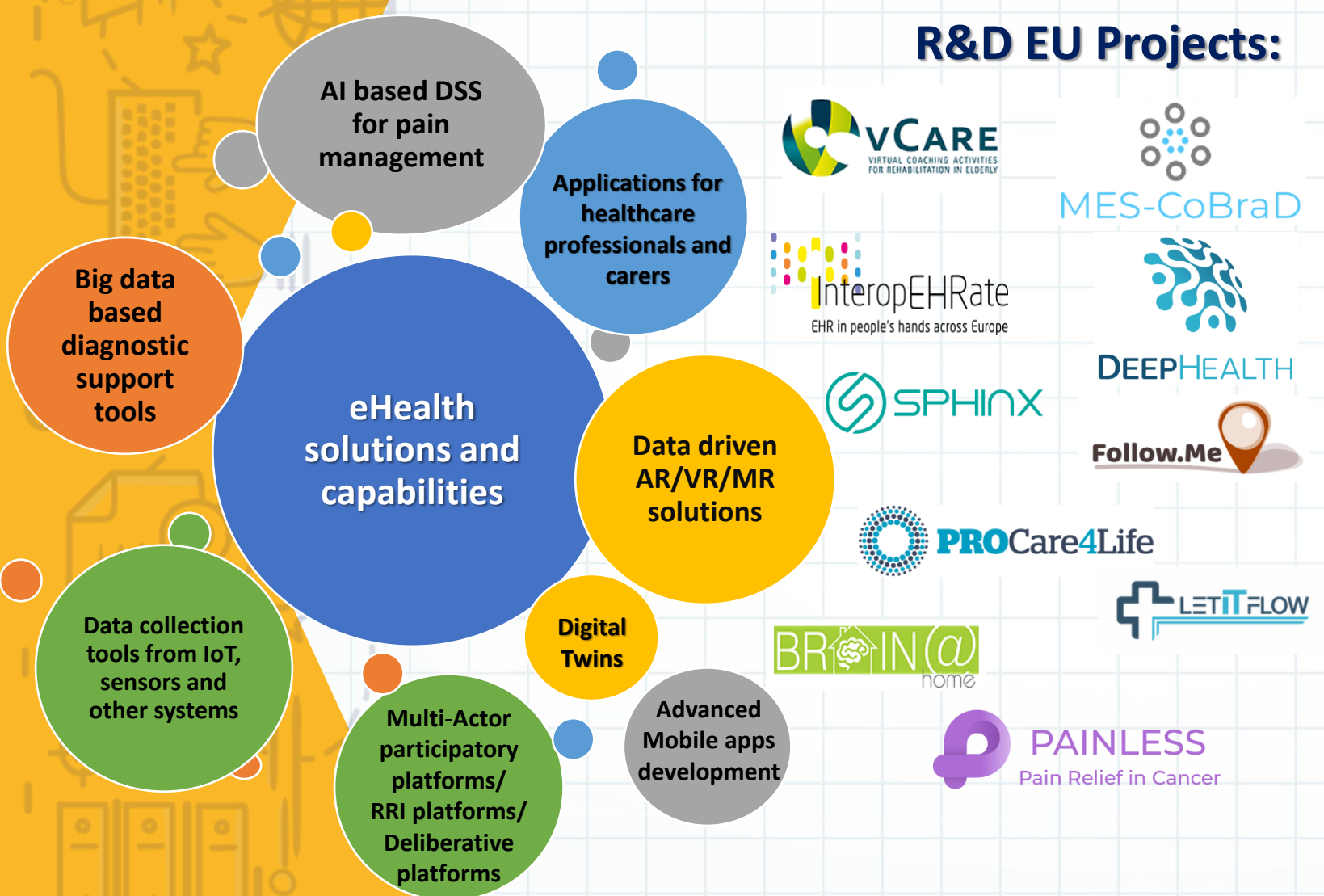
[HORIZON-HLTH-2023-TOOL-05-05: Harnessing the potential of real-time data analysis and secure Point-of-Care computing for the benefit of person-centred health and care delivery](#)

[HORIZON-HLTH-2023-IND-06-02: Expanding the European Electronic Health Record exchange Format to improve interoperability within the European Health Data Space](#)

[HORIZON-HLTH-2023-IND-06-07: Development and harmonisation of methodologies for assessing digital health technologies in Europe](#)



Software Imagination & Vision



R&D EU Projects:



COMPETENCES

- Software Tools & Platform development
- User Experience & Journey Design
- Integration and interoperability
- Digital Content development & eTraining
- Pilot deployment and implementation in Eastern Europe, by engaging key partners:
 - ✓ Hospitals, Hospice houses, Elderly centers, regional / national health authorities
 - ✓ City municipalities
 - ✓ NGOs & Clusters & Research Centers
 - ✓ Farmers & farmer associations
 - ✓ Industry 4.0
 - ✓ Energy DSO/TSO
 - ✓ LEAs & FRs
- Over 60 H2020 & Horizon Europe projects

In the field of health, SIMAVI develops, through its specialized department, eHealth, complex solutions aimed at improving the quality of services for citizens and for the administration, by introducing IT tools on a national scale (EHR, e-Prescription, e-Card). These systems are integrated in the Health Insurance Informatics Platform (PIAS), managed by the National Health Insurance House (CNAS).

- ✓ Tele-monitoring & Tele-rehabilitation applications
- ✓ AI based DSS to foster evidence-based pain relief methods in the treatment and alleviation of pain
- ✓ integrated, scalable and interactive care ecosystem to promote quality of life for elderly people
- ✓ Multisource real-world clinical information access and integration framework
- ✓ VR Assistant / AR/VR Training
- ✓ Application for healthcare professionals and carers
- ✓ Toolbox for decision support and adaptive control of air quality monitoring
- ✓ ML Anomaly Detection Component and NLP services
- ✓ Implement clustering & classification algorithms
- ✓ Serious Games for brain training
- ✓ Personalized platforms & AI-based DSS
- ✓ Diagnostic support tools
- ✓ Monitoring solution for elderly people



Contact details



Contact person	Monica FLOREA
Organisation	Software Imagination & Vision (SIMAVI)
Address	73-81 Bucuresti-Ploiesti Drive, Bucharest, Romania
Phone	+40213023350
E-mail	monica.florea@simavi.ro
B2Match profile	https://brokerage-event-focusing-on-cl1.b2match.io/my
LinkedIn/Twitter	



THANK YOU...



Monica FLOREA, Head of Unit European Projects Department

[European R&D Projects](#)



monica.florea@simavi.ro



MARMARA ÜNİVERSİTESİ
İNNOVASYON VE TEKNOLOJİ
TRANSFER UYGULAMA VE
ARAŞTIRMA MERKEZİ

