



T.C. SAĞLIK BAKANLIĞI
İSTANBUL
İL SAĞLIK MÜDÜRLÜĞÜ

ISTANBUL PROVINCIAL HEALTH DIRECTORATE



MARMARA ÜNİVERSİTESİ
İNNOVASYON VE TEKNOLOJİ
TRANSFER UYGULAMA VE
ARAŞTIRMA MERKEZİ

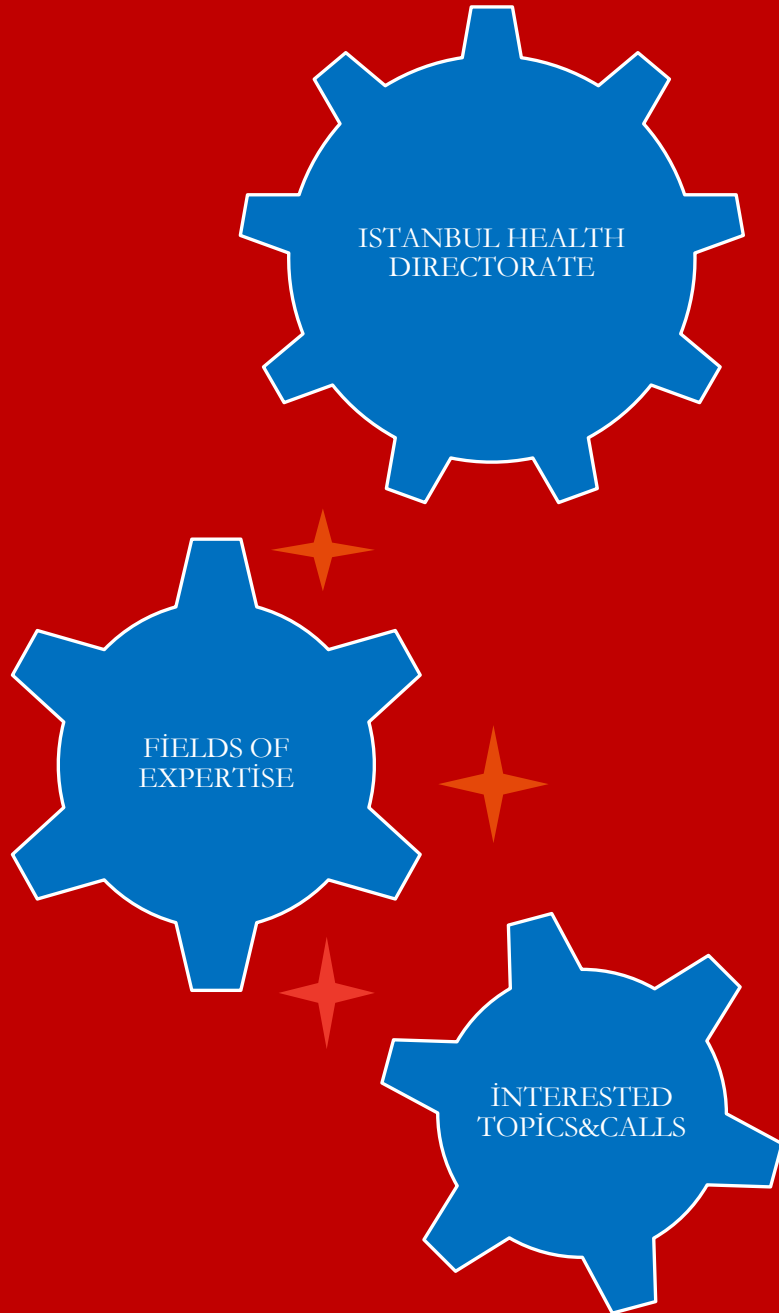




Horizon Europe Cluster 1: Health Brokerage Event



T.C. SAĞLIK BAKANLIĞI
İSTANBUL
İL SAĞLIK MÜDÜRLÜĞÜ



With a human -centered approach, to protect and improve individual and public health, to improve the quality of life of people, to give priority to patient and employee safety, to provide accessibility of these services, to provide quality and efficient health services in order to increase health awareness, and to provide public health in the health services we aim to offer In addition to taking all the necessary measures in matters, it is possible to make patients and employees feel safe and satisfied with a wide variety of health services; To meet the expectations of patients and employees at the highest level, in accordance with the policies and objectives of the Ministry of Health, based on the principle of continuous improvement, information produced and applied in the field of health sciences in the field of advanced technology, the satisfaction and safety of our patients and employees is the highest level in terms of service quality. In addition to its own population, Istanbul accepts from all over the country and foreign countries, especially to secondary and third health institutions and is the world's health center. In the following projects with the technical, physical and personnel infrastructure of our institution, which aims to minimize carbon footprint with its digital solutions that are open to innovation, open to innovation; We are pleased to declare that we can take part in the power of public authority.

DESTINATION 1. STAYING HEALTHY IN A RAPIDLY CHANGING SOCIETY
DESTINATION 2. LIVING AND WORKING IN A HEALTH-PROMOTING ENVIRONMENT
DESTINATION 3. TACKLING DISEASES AND REDUCING DISEASE BURDEN
DESTINATION 4. ENSURING ACCESS TO INNOVATIVE, SUSTAINABLE AND HIGH-QUALITY HEALTH CARE
DESTINATION 5. UNLOCKING THE FULL POTENTIAL OF NEW TOOLS, TECHNOLOGIES AND DIGITAL SOLUTIONS FOR A HEALTHY SOCIETY
DESTINATION 6. MAINTAINING AN INNOVATIVE, SUSTAINABLE AND GLOBALLY COMPETITIVE HEALTH INDUSTRY
MISSION CANCER CALL - RESEARCH AND INNOVATION ACTIONS SUPPORTING THE IMPLEMENTATION OF THE MISSION ON CANCER

ISTANBUL PROVINCIAL HEALTH DIRECTORATE

- Depend on us;
- 16 million population,
- 122.806 thousand personnel,
- 54 public hospitals,
- 4.992 family medicine institutions,
- 4 major central laboratories,
- 3 major public health laboratories a
- And there are systems that connect all health data.

ISTANBUL PROVINCIAL HEALTH DIRECTORATE

Project name/ starting date	Main activities	Role in the project		
Cooperation Platform Project with Integrated Participation in Combating Addiction (EKİP) 17.06.2020	An integrated software system (EKIP Module) has been developed, which will allow the services provided by all institutions and organizations to be provided in an integrated and participatory manner. In the light of the experiences gained from the Neighborhood Volunteers and Green Crescent Envoys Project within the scope of the EKIP Project, the units' knowledge, skills, communication, etc. With regard to the Mobile Team work, which is one of the important elements of the project activities, the Working Procedures and Principles of the mobile teams to be assigned in the field were determined, and it was possible to standardize the work to be done in this area.	Project Owner	Development of an artificial intelligence-based decision support system that will assist the specialist in the histopathological diagnosis and staging of gastric cancers using deep learning algorithms and CNN techniques. 01.04.2021	It plans to develop machine learning-based models to determine the histopathological diagnosis and staging of gastric cancers using deep learning algorithms. Project Owner
Producing Technology-Oriented, Sustainable Telerehabilitation Service and Training a Qualified Workforce in Istanbul (İSTER) 26.07.2022	In rehabilitation services; The infrastructure of the telerehabilitation system was created with critical technologies such as sensor technology, robotic technology, augmented reality, artificial intelligence and the internet of things. With the established system, to apply approximately 12.000 sessions of rehabilitation treatment to 240 patients during the project period in the field of telerehabilitation, and then to establish a system that will operate with a capacity of 1040 sessions/month; In addition, telerehabilitation training was planned for 1227 health personnel and 3938 university students through the online training module created within this scope in order to contribute to active employment by training qualified human resources needed for telerehabilitation.	Project Owner	All tests of Istanbul under one roof (ISLAB) laboratory network 28.12.2020	With the ISLAB Project, implemented for the first time in Turkey by the Istanbul Provincial Health Directorate, 8 laboratories in Istanbul were combined under one roof and 4 central laboratories were established. Thanks to this project, which was implemented for the first time in Turkey in Istanbul, citizens were provided with equal standards of service. Thanks to the network created for laboratory tests requested by 54 public hospitals in Istanbul and nearly 4,500 family physicians, 24/7 service is provided, and patients can see the test results online at 3 pm at the latest. Project Owner

ISTANBUL PROVINCIAL HEALTH DIRECTORATE

<p>Seed Algorithm Software and Artificial Intelligence Research and Development Center for the Health Sector AREL MED-I</p>	<p>In the field of software, which has become one of the most priority issues both in the world and in Turkey, especially in the fields of internet of things (IoT), artificial intelligence, virtual/augmented reality</p> <p>To provide infrastructure and training opportunities, to offer innovative solutions, to encourage new initiatives, start-up a thematic platform that will enable companies to offer value-added solutions in the field of health technologies. is the establishment of an accelerator center.</p>	<p>Project Partner</p>	<p>Best practices to empower families with Alzheimer's patients and avoiding their social exclusion (EFFE)</p> <p>01.09.2018</p>	<p>Partners worked to find the way to empower professionals and caregiver with a more inclusive point of view in terms of designing their processes of care; saving, in the same time, the "capacity" to live and be part of their communities as members. Especially during the lockdown and until now, partners exchanged their daily results working on the field, creating the conditions to define a shared method to face the problem with a 360° approach, opening a channel of discussions and mutual support among each partners and their local network.</p>	<p>Project Partner</p>
<p>Life platform for the families of the disadvantaged and those in need of care (BE HAPPY IN LIFE)</p> <p>01.01.2018</p>	<p>Planned within the scope of our project were completed with the contributions of our partner institutions and our local project team.</p> <p>https://erasmus-plus.ec.europa.eu/projects/search/details/2018-1-TR01-KA204-058392</p>	<p>Project Owner</p>	<p>High models of social Inclusion involving social and health Partners in Europe</p> <p>01.09.2017</p>	<p>The purpose of this project is to improve the competence of the professionals of the care and the social work in activities of social integration and rehabilitation to the ordinary world of people presenting crippling pathologies. It developed his own model of intervention by introducing the coaching into the educational routes of the professionals occurring with disabled people, mainly families and minors. This model begins with a work with a network widened to involve all the actors in the project of inclusion and proposes routes personalized with shared objectives.</p>	<p>Project Partner</p>

Early Diagnosis Digital Pathology and Artificial Intelligence Assisted Telepathology Network



- Guided by Europe's Beating Cancer Plan and Shaping Europe Digital Future ; this project contribute to prevention, screening and early detection. More than 3.5 million individuals in Europe have been diagnosed with cancer, and this figure is estimated to exceed 4.3 million by 2035.
- Despite many analyzes, imaging systems and applications developed in the diagnosis and treatment processes of diseases, it is a pathology science that can provide a definitive diagnosis.
- The shortage of specialist physicians in the sub-branches of the pathology department in hospitals, the physical transportation of samples taken from patients to different institutions and the use of courier systems cause the increase in the test time, high carbon footprintand the prolongation in diagnosis period.
- Considering the negativities experienced in the diagnosis and diagnosis of cancer, it is aimed to establish advanced digital pathology centers throughout the province with a sufficient number of specialist physicians in the field of pathology in our target project. With the establishment of the centers, the early diagnosis and treatment methods of cancer will be optimized, and the digitization of the slides to be diagnosed will enable the specialist physicians to analyze and report the images taken independently from the location with special telepathology network.
- Thanks to our artificial intelligence-supported joint telepathology network creation software, it is aimed to develop a new system independent of location, which will provide equal opportunities to different groups such as women, men, children, disabled, immigrants and elderly populations on digital environment.The fact that it will serve all regions, including rural areas, with ease of cost and rapid diagnosis will be important in terms of early prevention of cancer risk formation and will contribute to improving the quality of life of patients and their relatives. The results will ensure the dissemination of the system in Europe.
- We needs concertium and partnerships.



Contact details



Contact person

Organisation	Istanbul Provincial Health Directorate
Address	Binbirdirek, Peykhane Cd. No:8, 34122 Fatih/İstanbul
Phone	00905434461256
E-mail	gulseren.sakarya@saglik.gov.tr
B2Match profile	https://brokerage-event-focusing-on-cl1.b2match.io/participants/273 https://cluster-health-horizon-europe-brokerage2023.b2match.io/participants/1028



**ISTANBUL
PROJECT
ACADEMY**



THANK YOU...

T.C. SAĞLIK BAKANLIĞI
İSTANBUL
İL SAĞLIK MÜDÜRLÜĞÜ



MARMARA ÜNİVERSİTESİ
İNNOVASYON VE TEKNOLOJİ
TRANSFER UYGULAMA VE
ARAŞTIRMA MERKEZİ

