

# Horion Europe HealthSSH Brokerage Event

**SHOTA RUSTAVELI**  
**NATIONAL SCIENCE FOUNDATION OF GEORGIA**

**Country** | Georgia (GEO)



**Tamar Berberashvili**  
**NCP of Georgia**



**Contact information:**

**Email:** [tberberashvili@rustaveli.org.ge](mailto:tberberashvili@rustaveli.org.ge)



Image by: © Monkey Business Images/Shutterstock.com



Project: 101057279 — HNN3.0

**une**  
Pitching Session

## Topics of interests:

- HORIZON-HLTH-2024-STAYHLTH-01-02-two-stage: Towards a holistic support to children and adolescents' health and care provisions in an increasingly digital society
- HORIZON-HLTH-2024-ENVHLTH-02-06-two-stage: The role of environmental pollution in non-communicable diseases: air, noise and light and hazardous waste pollution



## Contact information:

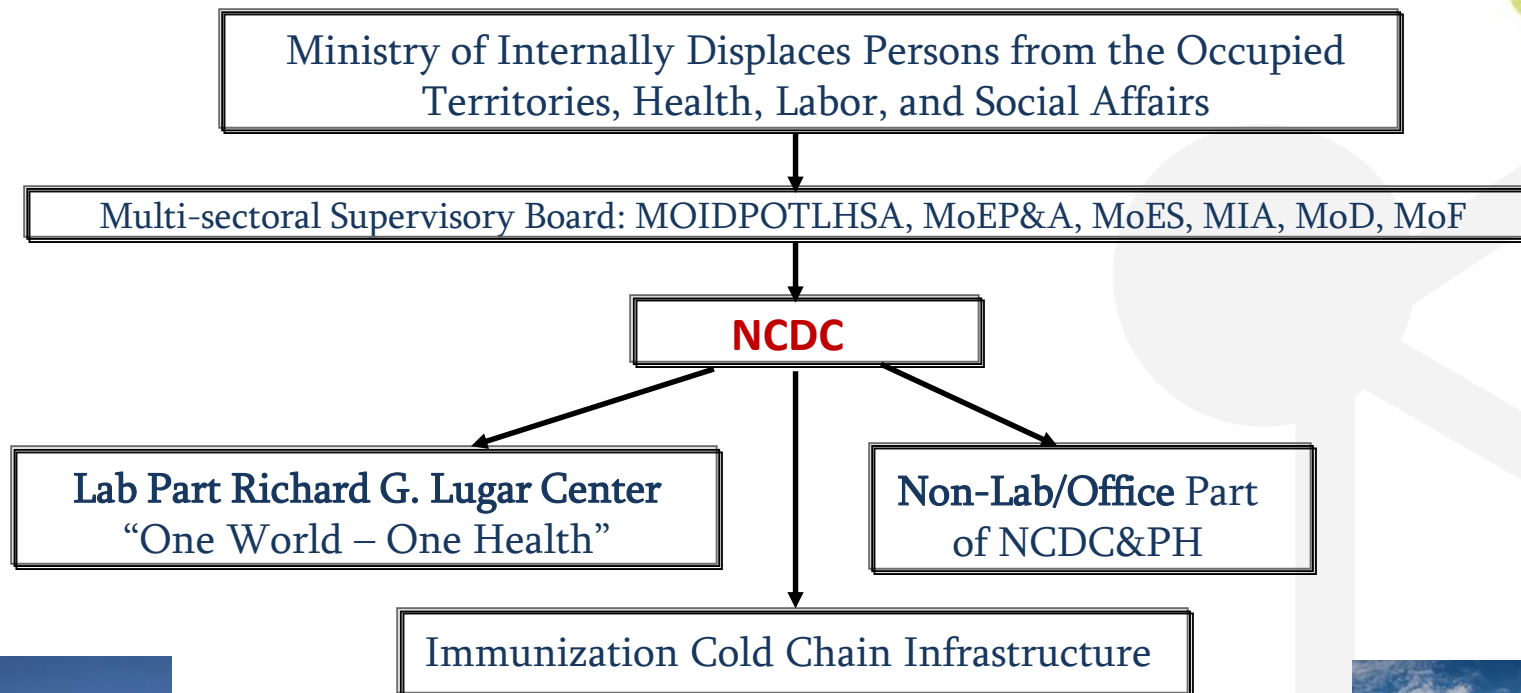
Paata Imnadze: [pimnadze@ncdc.ge](mailto:pimnadze@ncdc.ge)

Keti Zaridze: [k.zaridze@ncdc.ge](mailto:k.zaridze@ncdc.ge)

<https://www.ncdc.ge>

Email: [ncdc@ncdc.ge](mailto:ncdc@ncdc.ge)

[www.healthncp.net](http://www.healthncp.net)



**Vision:** Our Knowledge – for Public Health  
**Mission:** Protection and improvement of the health of Georgia’s population through scientific evidence-based prevention of diseases, preparing for and timely responding to threats of public health





## Strategic units of NCDC

**State Public Health Programs:**

- Immunization
- Blood Safety
- TB
- HIV/AIDS
- Screening
- Surveillance
- MCH
- Occupational diseases
- Health promotion
- HCV Screening

**Epid-surveillance of Infectious Diseases:**

- VPD
- Diarrheal
- Vector borne
- Respiratory
- Zoonotic
- Parasitic
- Hepatitis /STI/HIV/ TB


**Surveillance of NCD:**

- CVD
- Cancer
- Diabetes
- CRD
- Risk- factors
- Health promotion
- Tobacco Control
- Strengthening


- GF Programs Recipient
- Environmental Health
- Public Health Preparedness and Response
- Medical Statistics
- Quality Control
- International Collaboration

- Implementing Health impact assessment (HIA) for Strategic Environmental Assessment (SEA);
- Register and test biocides on e-portal;
- working on development of health indicators related to different environmental pollutants.


## Electronic Health Capacities – NCDC




•Georgian Birth Registry since 2016, digitalized, covering 99.2% of all births  
•Includes data on maternal demographics, antenatal care, delivery, newborn and complications



Cancer registry since 2015, fully electronic since 2019



Hospitalization registry covers data on all hospital admissions



Immunization registry all administered doses of vaccines including basic characteristics  
•Including COVID-19 vaccines

## Training Center

**Lead**

- Surveillance state program since 2019 - 2.7 years old children
- Data from multiple indicator cluster survey 2018 - lead in children
- Blood lead level among pregnant women and during breastfeeding and 7-14 years old children

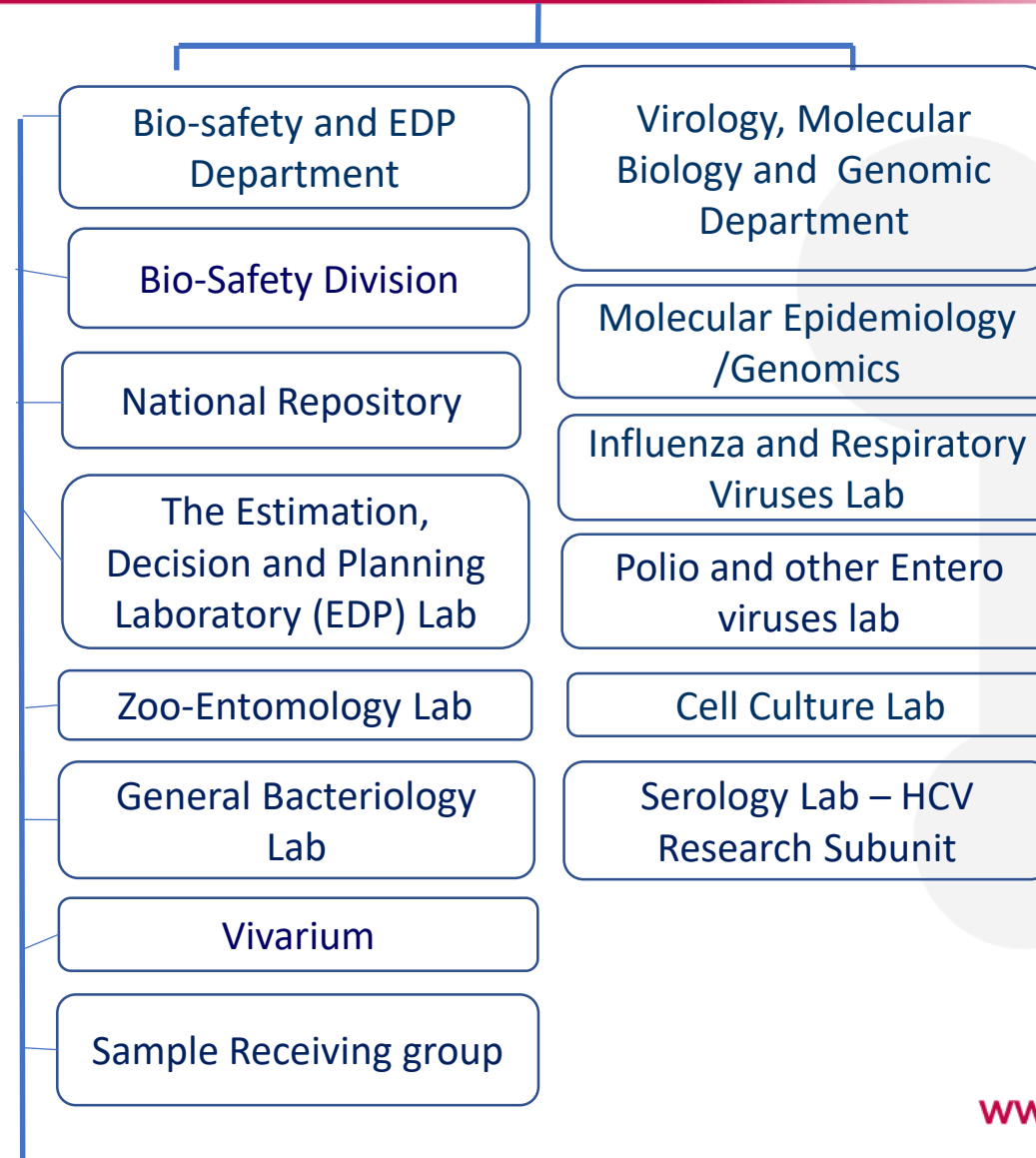
[www.healthncp.net](http://www.healthncp.net)





3 Labs accredited by world health organization (WHO)  
Polio; Influenza; Measles/Rubella

5 Labs Connected to WHO Lab Network with The Environmental Quality Act (EQA)  
Rota; Invasive Meningitis  
Malaria; Salmonellosis; AMR



Accreditation & Certification – NCDC/Lugar Center



**Topic of interest:** HORIZON-HLTH-2024-STAYHLTH-01-05-two-stage: Personalised prevention of non-communicable diseases - addressing areas of unmet needs using multiple data sources

MEA is engaged in active scientific, practical and educational work. It has held 14 international scientific conferences "Health and Ecology"; "Modern Challenges of Medical Ecology". Within the framework of the State program "halyomorpha halys" MEA conducts trainings, media seminars, develop hygienic norms and practical recommendations.

MEA consider it appropriate to conduct the following activities in order to better educate the given issue:

- **Organizing informative-cognitive TV programs** on local televisions, as well as organizing scientific-educational meetings using e-platforms in order to limit the spread of non-infectious diseases;
- **Conducting trainings, seminars and teaching** with the primary link of public health, the second link, public health workers and organized population. Individual work with population groups both live and online;
- **Creating special questionnaires, epidemiological investigation** based on questionnaires to assess the health of the population in the regions;
- **Determination of evaluation criteria** for the prevention of non-infectious diseases by regions;
- **Development of preventive measures and practical recommendations** (promotion of a healthy lifestyle, proper planning of the daily routine, development of the principles of healthy nutrition and physical activity) in order to promote the health of the population.

**Contact persons:** prof. Marina Giorgobiani email: [m.giorgobiani@tsmu.edu](mailto:m.giorgobiani@tsmu.edu)  
President of MEA, a TV author's program-"Healthy lifestyle"- author

[www.healthncp.net](http://www.healthncp.net)

**Topic of interest:** HORIZON-HLTH-2024-ENVHLTH-02-06-two-stage: The role of environmental pollution in non-communicable diseases: air, noise and light and hazardous waste pollution.

**GEBMA involved in THE PEP** (Pan-European Process on Transport, Health and Environment).

**Main purpose of GEBMA:**

- To protect human health and environment against harmful environmental and occupational factors;
- To raise public awareness and education on the environment and health protection;
- To prepare materials for the Georgian environmental legislation and regulation;
- To foster women's participation in building up civic society;
- To establish and maintain effective collaboration with governments, governmental organizations, NGOs, professional bodies and other groups or individuals concerned with environmental and health issues.
- To design to raise awareness of the dangers of asbestos-containing materials among the broad community of relevant professionals who may not be aware of it, stressing the potential risks posed by the uses of asbestos;
- Studying the medical ecological indicators of arsenic deposits in Georgia, determining its residues in the environment and assessing the risks of their negative impact on the health of the population;
- etc.

Contact persons: **Prof. Manana Juruli** email: [biomonitoring@gmx.com](mailto:biomonitoring@gmx.com)  
Co-Chair of GEBMA, a member of THE PEP Stirring Committee

[www.healthncp.net](http://www.healthncp.net)

## Organisation: Ilia State University

### Topic of interest:

HORIZON-HLTH-2024-STAYHLTH-01-02-two-stage. Towards holistic support to children and adolescents' health and care provisions in an increasingly digital society.

### Autonomus HHealthcare Alternative for youTH -- AutoHeALTH

### Organizational expertise in relation to the topic:

The research and development efforts will be of a substantially interdisciplinary nature, represented by the expert groups of Ilia State University, **Georgia - *Centre of Bioethics*** at the Faculty of Arts and Sciences and various other groups from **the Faculty of Natural Sciences and Medicine**.

### An idea of the existing partnerships:

We are looking forward to joining a strong consortium represented by experts from **cybernetic, psychological, medical**, and other related disciplines. The formation of the consortium has just begun with the negotiations with the **strong computer science group Combinatorial Optimization and Decision Support (CODES)** at Katholieke Universiteit Leuven, Belgium.

We are open to other fruitful communications on the current forum.

[www.healthncp.net](http://www.healthncp.net)



## Organisation: Ilia State University

### Autonomus HHealthcare Alternative for youTH -- AutoHeALTH

#### Aims:

- **To formulate proper guidelines** ethical and legislative measures that are to be respected once the own health, physical activity, nutrition habits, leisure needs, mental and social well-being of children and adolescents are maintained through various personalized approaches, including digital tools.
- Using corresponding mathematical and statistical frameworks **to monitor how the recommended ethical measures are respected for these vulnerable youth groups both at family and community levels.** The basic idea is to improve the level of awareness of children, adolescents and their parents about available ethical and legislative norms.
- **To develop a specific environment** for improved access to self-care digital facilities and at the same time to maintain proper education and guidance for children and adolescents regarding the protection of their privacy and individual rights.
- **To provide a solid ground for the experimental testing and benchmarking of the R&I efforts outcomes** through access to the vulnerable groups of the local population.
- **To establish and develop novel digital facilities for the monitoring and development of healthy lifestyles** of youth, grounded on appropriate ethical and legislative environments. The quantitative assessment and evaluation methods will be used extensively.

#### Contact persons:

Nino Rodonaia [nino\\_rodonaia@iliauni.edu.ge](mailto:nino_rodonaia@iliauni.edu.ge)

Ivane Abiatari [ivane.Abiatari@iliauni.edu.ge](mailto:ivane.Abiatari@iliauni.edu.ge)

Bidzina Shergelashvili [bidzina.shergelashvili@iliauni.edu.ge](mailto:bidzina.shergelashvili@iliauni.edu.ge)

<https://iliauni.edu.ge/en/>

[www.healthncp.net](http://www.healthncp.net)



[www.healthncp.net](http://www.healthncp.net)

# Thank you

**SHOTA RUSTAVELI NATIONAL SCIENCE FOUNDATION  
OF GEORGIA**

[HTTPS://RUSTAVELI.ORG.GE/](https://rustaveli.org.ge/)

**Tamar Berberashvili  
NCP of Georgia**

e-mail: [tberberashvili@rustaveli.org.ge](mailto:tberberashvili@rustaveli.org.ge)

## #healthNCPnet



[twitter.com/HealthNCPNet](https://twitter.com/HealthNCPNet)



[www.youtube.com/channel/HealthNCPNet](https://www.youtube.com/channel/HealthNCPNet)



[www.linkedin.com/in/health-ncp-net](https://www.linkedin.com/in/health-ncp-net)